

**BLUE-MASTER®**  
by *celesa*



FRESE PER  
ELETTROFRESATRICI

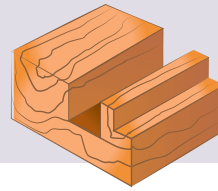
**FRESA A TAGLIENTI DIRITTI PER CANALI**

Ref. FRC1

MD

1Z

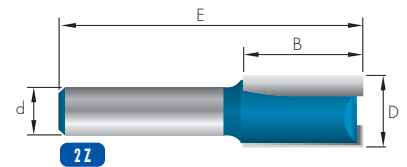
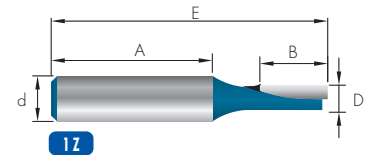
2Z



Ref. FRC10500



							FRC1
	Z	D	B	d	A	E	€
FRC10300	1Z	3,0	8,0	8,0	32,0	51,0	<b>29,52</b>
FRC10400	1Z	4,0	8,0	8,0	33,6	51,0	<b>29,52</b>
FRC10500	1Z	5,0	12,5	8,0	29,7	51,0	<b>31,74</b>
FRC10600	2Z	6,0	16,0	8,0	-	48,0	<b>31,74</b>
FRC10800	2Z	8,0	20,0	8,0	-	51,0	<b>32,94</b>
FRC11000	2Z	10,0	20,0	8,0	-	51,0	<b>32,94</b>
FRC11200	2Z	12,0	20,0	8,0	-	51,0	<b>35,33</b>

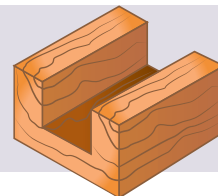

**FRESA A TAGLIENTI DIRITTI PER CANALI TAGLIATO AL CENTRO**

Ref. FRC2

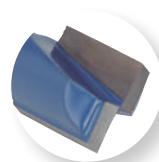
MD

1Z

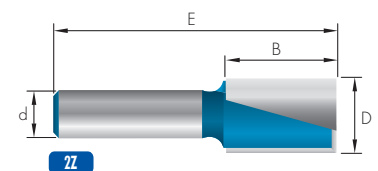
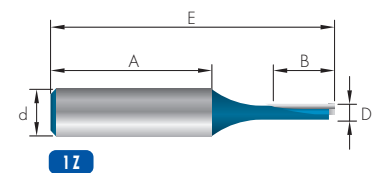
2Z



Ref. FRC21400



							FRC2
	Z	D	B	d	A	E	€
FRC20300	1Z	3,0	11,0	8,0	29,0	51,0	<b>25,66</b>
FRC20400	2Z	4,0	11,0	8,0	-	51,2	<b>25,66</b>
FRC20500	2Z	5,0	11,0	8,0	-	51,2	<b>27,59</b>
FRC20600	2Z	6,0	19,5	8,0	-	51,0	<b>27,59</b>
FRC20760	2Z	7,6	21,0	8,0	-	58,0	<b>27,59</b>
FRC20800	2Z	8,0	20,0	8,0	-	51,0	<b>27,59</b>
FRC21000	2Z	10,0	20,0	8,0	-	51,0	<b>28,65</b>
FRC21200	2Z	12,0	20,0	8,0	-	51,0	<b>30,72</b>
FRC21400	2Z	14,0	20,0	8,0	-	51,0	<b>32,99</b>
FRC21600	2Z	16,0	20,0	8,0	-	51,0	<b>35,52</b>
FRC21800	2Z	18,0	20,0	8,0	-	51,0	<b>36,87</b>
FRC22000	2Z	20,0	20,0	8,0	-	51,0	<b>40,02</b>
FRC22200	2Z	22,0	25,0	8,0	-	56,0	<b>41,59</b>
FRC22400	2Z	24,0	10,0	8,0	-	42,5	<b>42,68</b>

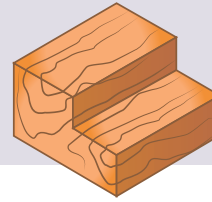


**FRESA A GRADINO**

Ref. FRC3

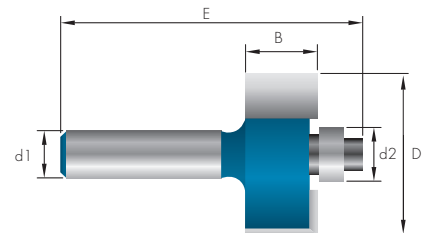
MD

2Z



Ref. FRC32860

						FRC3
	D	B	d1	d2	E	€
FRC32860	28,6	12,7	8,0	9,5	53,4	<b>49,71</b>

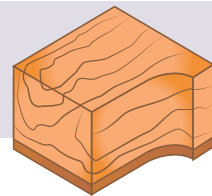


**FRESA PER REFILARE**

Ref. FRC4

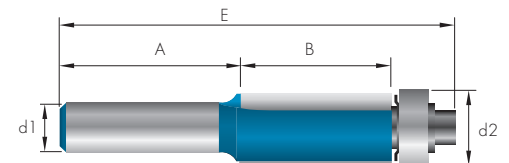
MD

2Z



Ref. FRC41270

						FRC4
	d2	B	d1	A	E	€
FRC41270	12,7	25,4	8,0	30,0	67,0	<b>38,99</b>

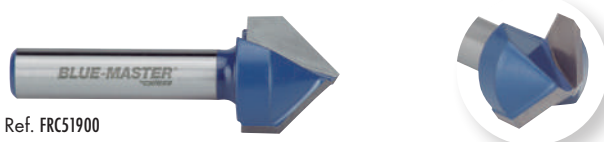
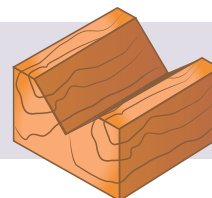


**FRESA PER INTAGLI A "V" 90°**

Ref. FRC5

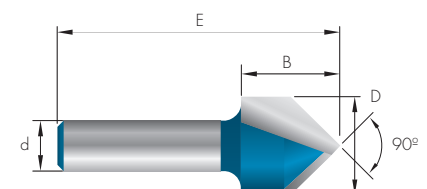
MD

90°



Ref. FRC51900

						FRC5
	D	B	d	E	€	
FRC51270	12,7	12,7	8,0	45,5	<b>32,09</b>	
FRC51600	16,0	15,9	8,0	45,7	<b>36,21</b>	
FRC51900	19,0	16,0	8,0	51,5	<b>42,82</b>	



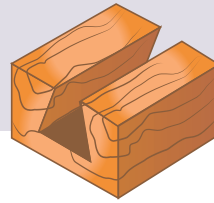
**FRESA PER UNIONE A CODA DI RONDINE**

Ref. FRC6

MD

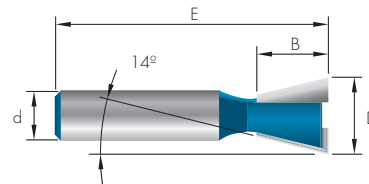


14°



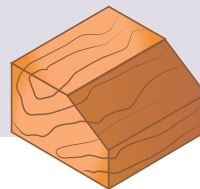
Ref. FRC61270

					FRC6
	D	B	d	E	€
FRC61270	12,7	11,8	8,0	45	<b>48,27</b>


**FRESA PER SMUSSARE 45°**

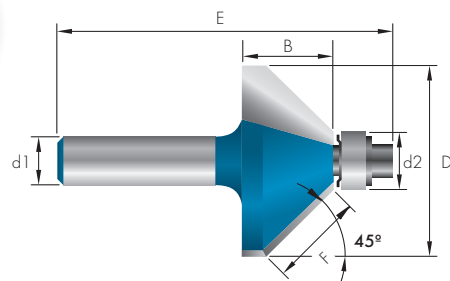
Ref. FRC7

MD



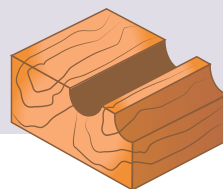
Ref. FRC73200

							FRC7
	D	B	d1	d2	E	F	€
FRC73200	32,0	15,0	8,0	9,5	56	15,7	<b>45,24</b>


**FRESA A RAGGIO CONCAVO**

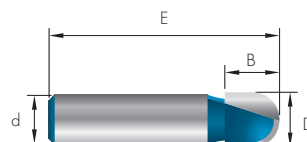
Ref. FRC8

MD



Ref. FRC81270

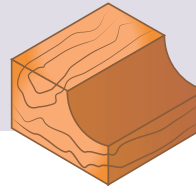
					FRC8
	D	B	d	E	€
FRC80950	9,5	9,5	8,0	40	<b>39,71</b>
FRC81270	12,7	12,7	8,0	40	<b>42,39</b>



**FRESA A RAGGIO CONCAVO**

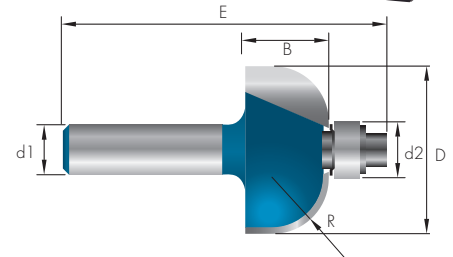
**MD**

Ref. FRC9



Ref. FRC92850

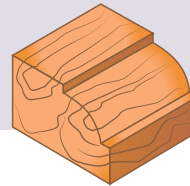
FRC9							
	D	B	d1	d2	E	R	€
FRC92850	28,5	14,1	8,0	9,5	50,0	9,5	<b>61,01</b>
FRC93500	35,0	16,0	8,0	9,5	59,0	12,7	<b>72,37</b>



**FRESA A RAGGIO CONVESSO PER MATERIALI COMPOSITI**

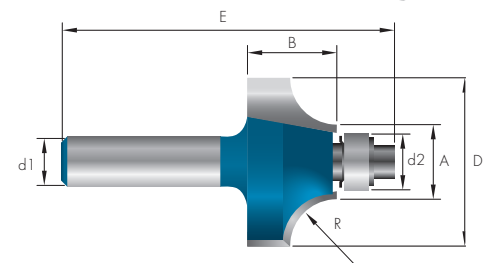
**MD**

Ref. FRC10



Ref. FRC102860

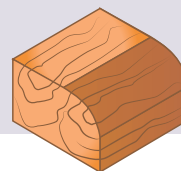
FRC10								
	D	B	d1	A	E	d2	R	€
FRC102540	25,4	13,5	8,0	12,7	54,0	9,5	6,35	<b>66,68</b>
FRC102860	28,6	15,2	8,0	12,7	57,0	9,5	7,95	<b>70,32</b>
FRC103180	31,8	16,5	8,0	12,7	56,0	9,5	9,55	<b>75,69</b>
FRC103810	38,1	19,0	8,0	12,7	59,0	9,5	12,7	<b>88,07</b>



**FRESA PER SMUSSARE A RAGGIO CONVESSO PER MATERIALI COMPOSITI**

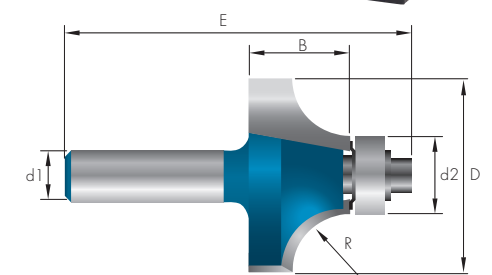
**MD**

Ref. FRC11



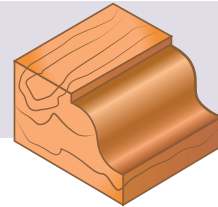
Ref. FRC112860

FRC11							
	D	B	d1	d2	E	R	€
FRC112500	25,0	13,5	8,0	12,7	55,0	6,35	<b>66,68</b>
FRC112860	28,6	15,2	8,0	12,7	57,0	7,95	<b>70,32</b>
FRC113180	31,8	16,5	8,0	12,7	57,0	9,55	<b>75,69</b>
FRC113810	38,1	16,5	8,0	12,7	59,0	12,7	<b>88,07</b>



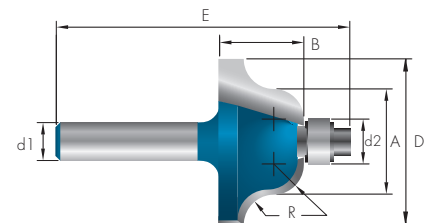
**FRESA PER SMUSSARE PROFILATE PER MATERIALI COMPOSITI**
**MD**

Ref. FRC12

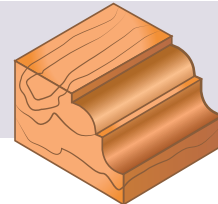


Ref. FRC123500

								FRC12
	D	B	d1	A	E	d2	R	€
FRC123500	35,0	17,8	8,0	22,2	62,0	9,5	6,35	<b>94,76</b>

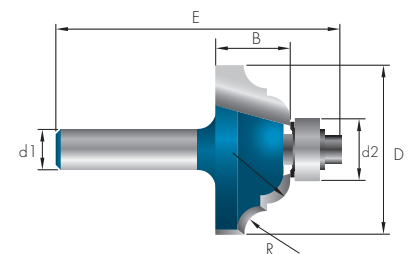

**FRESA A DOPPIO RAGGIO PER MATERIALI COMPOSITI**
**MD**

Ref. FRC13

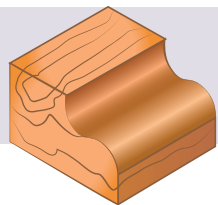


Ref. FRC133500

							FRC13
	D	B	d1	d2	E	R	€
FRC133500	35,0	15,4	8,0	12,7	59,0	6,35	<b>63,34</b>


**FRESA PER SMUSSARE PROFILATE PER MATERIALI COMPOSITI**
**MD**

Ref. FRC14



Ref. FRC143180

							FRC14
	D	B	d1	d2	E	R	€
FRC143180	31,8	12,6	8,0	12,7	55,0	4,8	<b>74,10</b>
FRC143810	38,1	15,8	8,0	12,7	58,0	6,3	<b>84,65</b>

