

**BLUE-MASTER**<sup>®</sup>  
by *celesa*



FRAISES  
BOIS

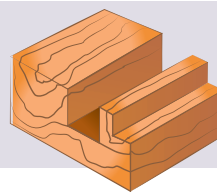
## FRAISE À DÉFONCER

CARBURE

1Z

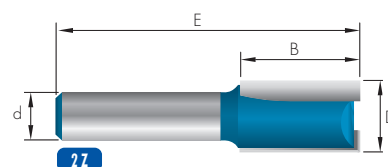
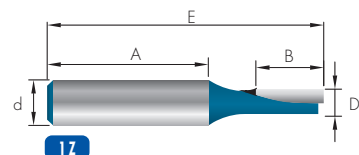
2Z

Réf. FRC1



Réf. FRC10500

							FRC1
	Z	D	B	d	A	E	€
FRC10300	1Z	3,0	8,0	8,0	32,0	51,0	<b>27,66</b>
FRC10400	1Z	4,0	8,0	8,0	33,6	51,0	<b>27,66</b>
FRC10500	1Z	5,0	12,5	8,0	29,7	51,0	<b>29,75</b>
FRC10600	2Z	6,0	16,0	8,0	-	48,0	<b>29,75</b>
FRC10800	2Z	8,0	20,0	8,0	-	51,0	<b>30,88</b>
FRC11000	2Z	10,0	20,0	8,0	-	51,0	<b>30,88</b>
FRC11200	2Z	12,0	20,0	8,0	-	51,0	<b>33,12</b>



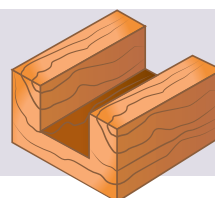
## FRAISE À DÉFONCER AVEC COUPE AU CENTRE

CARBURE

1Z

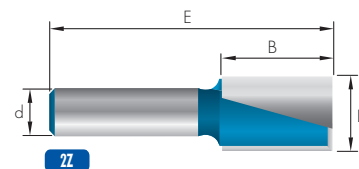
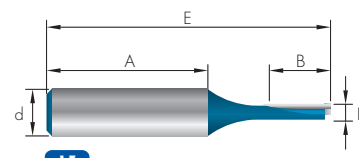
2Z

Réf. FRC2



Réf. FRC21400

							FRC2
	Z	D	B	d	A	E	€
FRC20300	1Z	3,0	11,0	8,0	29,0	51,0	<b>24,06</b>
FRC20400	2Z	4,0	11,0	8,0	-	51,2	<b>24,06</b>
FRC20500	2Z	5,0	11,0	8,0	-	51,2	<b>25,87</b>
FRC20600	2Z	6,0	19,5	8,0	-	51,0	<b>25,87</b>
FRC20760	2Z	7,6	21,0	8,0	-	58,0	<b>25,87</b>
FRC20800	2Z	8,0	20,0	8,0	-	51,0	<b>25,87</b>
FRC21000	2Z	10,0	20,0	8,0	-	51,0	<b>26,85</b>
FRC21200	2Z	12,0	20,0	8,0	-	51,0	<b>28,80</b>
FRC21400	2Z	14,0	20,0	8,0	-	51,0	<b>30,93</b>
FRC21600	2Z	16,0	20,0	8,0	-	51,0	<b>33,30</b>
FRC21800	2Z	18,0	20,0	8,0	-	51,0	<b>34,56</b>
FRC22000	2Z	20,0	20,0	8,0	-	51,0	<b>37,53</b>
FRC22200	2Z	22,0	25,0	8,0	-	56,0	<b>38,99</b>
FRC22400	2Z	24,0	10,0	8,0	-	42,5	<b>40,02</b>

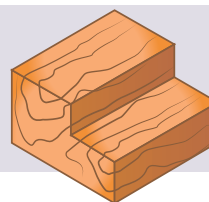


**FRAISE À FEUILLURER**

Réf. FRC3

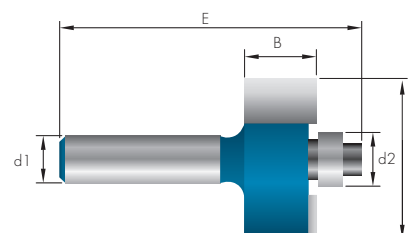
CARBURE

2Z



Réf. FRC32860

						FRC3
	D	B	d1	d2	E	€
FRC32860	28,6	12,7	8,0	9,5	53,4	46,59

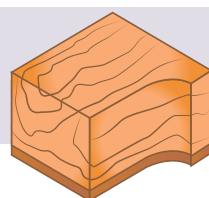


**FRAISE À AFFLEURER MULTI-FONCTIONS**

Réf. FRC4

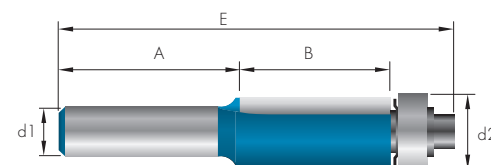
CARBURE

2Z



Réf. FRC41270

						FRC4
	d2	B	d1	A	E	€
FRC41270	12,7	25,4	8,0	30,0	67,0	36,55

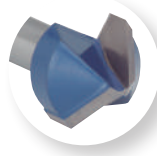
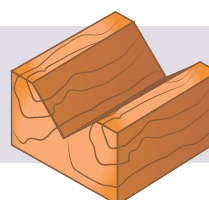


**FRAISE À RAINURER EN V 90°**

Réf. FRC5

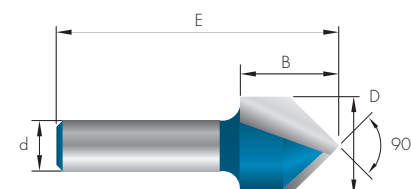
CARBURE

90°



Réf. FRC51900

					FRC5
	D	B	d	E	€
FRC51270	12,7	12,7	8,0	45,5	30,07
FRC51600	16,0	15,9	8,0	45,7	33,96
FRC51900	19,0	16,0	8,0	51,5	40,13

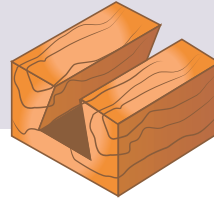


**FRAISE À QUEUE D'ARONDE**

Réf. FRC6

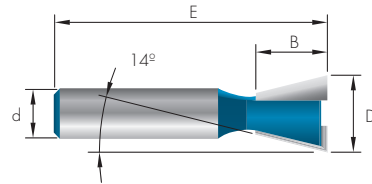
**CARBURE**


14°

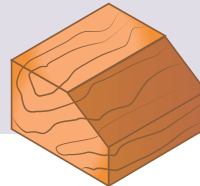


Réf. FRC61270

					FRC6
	D	B	d	E	€
FRC61270	12,7	11,8	8,0	45	45,24

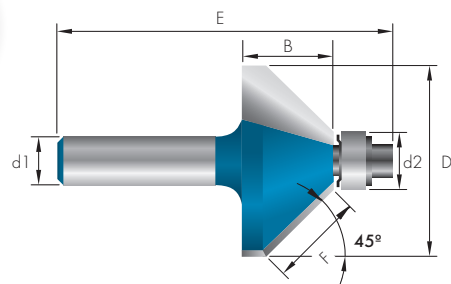

**FRAISE À CHANFREINER 45° AVEC ROULEMENT**

Réf. FRC7

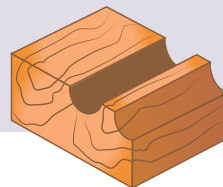
**CARBURE**


Réf. FRC73200

							FRC7
	D	B	d1	d2	E	F	€
FRC73200	32,0	15,0	8,0	9,5	56	15,7	42,41

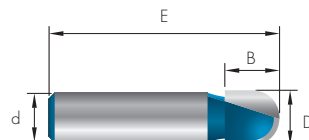

**FRAISE POUR PLATEAUX EN BOIS**

Réf. FRC8

**CARBURE**


Réf. FRC81270

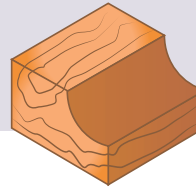
					FRC8
	D	B	d	E	€
FRC80950	9,5	9,5	8,0	40	37,23
FRC81270	12,7	12,7	8,0	40	39,75



**FRAISE À CONGÉ AVEC ROULEMENT**

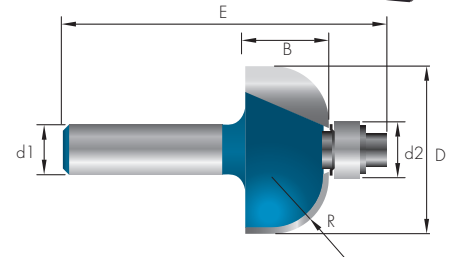
**CARBURE**

Réf. FRC9



Réf. FRC2850

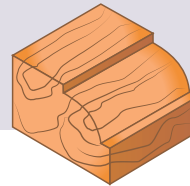
FRC9							
	D	B	d1	d2	E	R	€
FRC2850	28,5	14,1	8,0	9,5	50,0	9,5	<b>57,18</b>
FRC93500	35,0	16,0	8,0	9,5	59,0	12,7	<b>67,84</b>



**FRAISE À ARRONDIR QUART DE ROND**

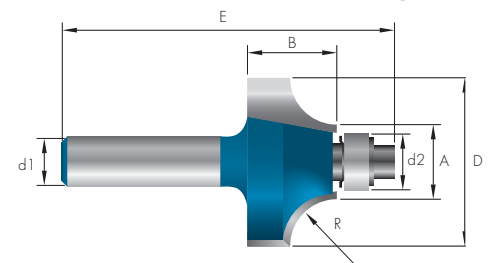
**CARBURE**

Réf. FRC10



Réf. FRC102860

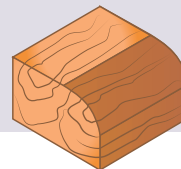
FRC10								
	D	B	d1	A	E	d2	R	€
FRC102540	25,4	13,5	8,0	12,7	54,0	9,5	6,35	<b>62,51</b>
FRC102860	28,6	15,2	8,0	12,7	57,0	9,5	7,95	<b>65,93</b>
FRC103180	31,8	16,5	8,0	12,7	56,0	9,5	9,55	<b>70,96</b>
FRC103810	38,1	19,0	8,0	12,7	59,0	9,5	12,7	<b>82,56</b>



**FRAISE À ARRONDIR QUART DE ROND**

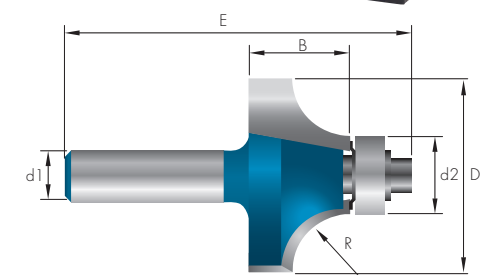
**CARBURE**

Réf. FRC11



Réf. FRC112860

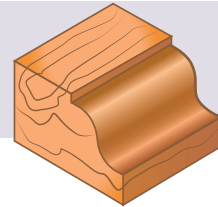
FRC11							
	D	B	d1	d2	E	R	€
FRC112500	25,0	13,5	8,0	12,7	55,0	6,35	<b>62,51</b>
FRC112860	28,6	15,2	8,0	12,7	57,0	7,95	<b>65,93</b>
FRC113180	31,8	16,5	8,0	12,7	57,0	9,55	<b>70,96</b>
FRC113810	38,1	16,5	8,0	12,7	59,0	12,7	<b>82,56</b>





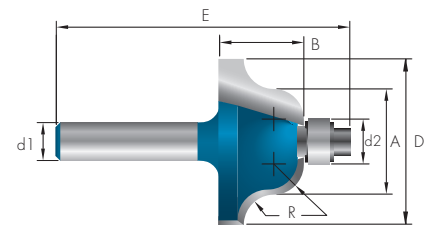
**FRAISE À GORGE AVEC ROULEMENT**
**CARBURE**

Réf. FRC12

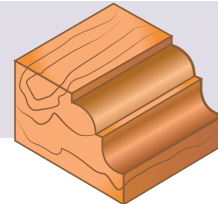


Réf. FRC123500

								FRC12
	D	B	d1	A	E	d2	R	€
FRC123500	35,0	17,8	8,0	22,2	62,0	9,5	6,35	<b>88,85</b>

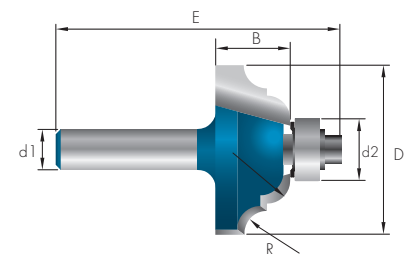

**FRAISE POUR MOULURE DÉCORATIVE**
**CARBURE**

Réf. FRC13

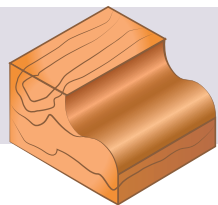


Réf. FRC133500

							FRC13
	D	B	d1	d2	E	R	€
FRC133500	35,0	15,4	8,0	12,7	59,0	6,35	<b>59,38</b>


**FRAISE À GORGE AVEC ROULEMENT**
**CARBURE**

Réf. FRC14



Réf. FRC143180

							FRC14
	D	B	d1	d2	E	R	€
FRC143180	31,8	12,6	8,0	12,7	55,0	4,8	<b>69,46</b>
FRC143810	38,1	15,8	8,0	12,7	58,0	6,3	<b>79,36</b>

