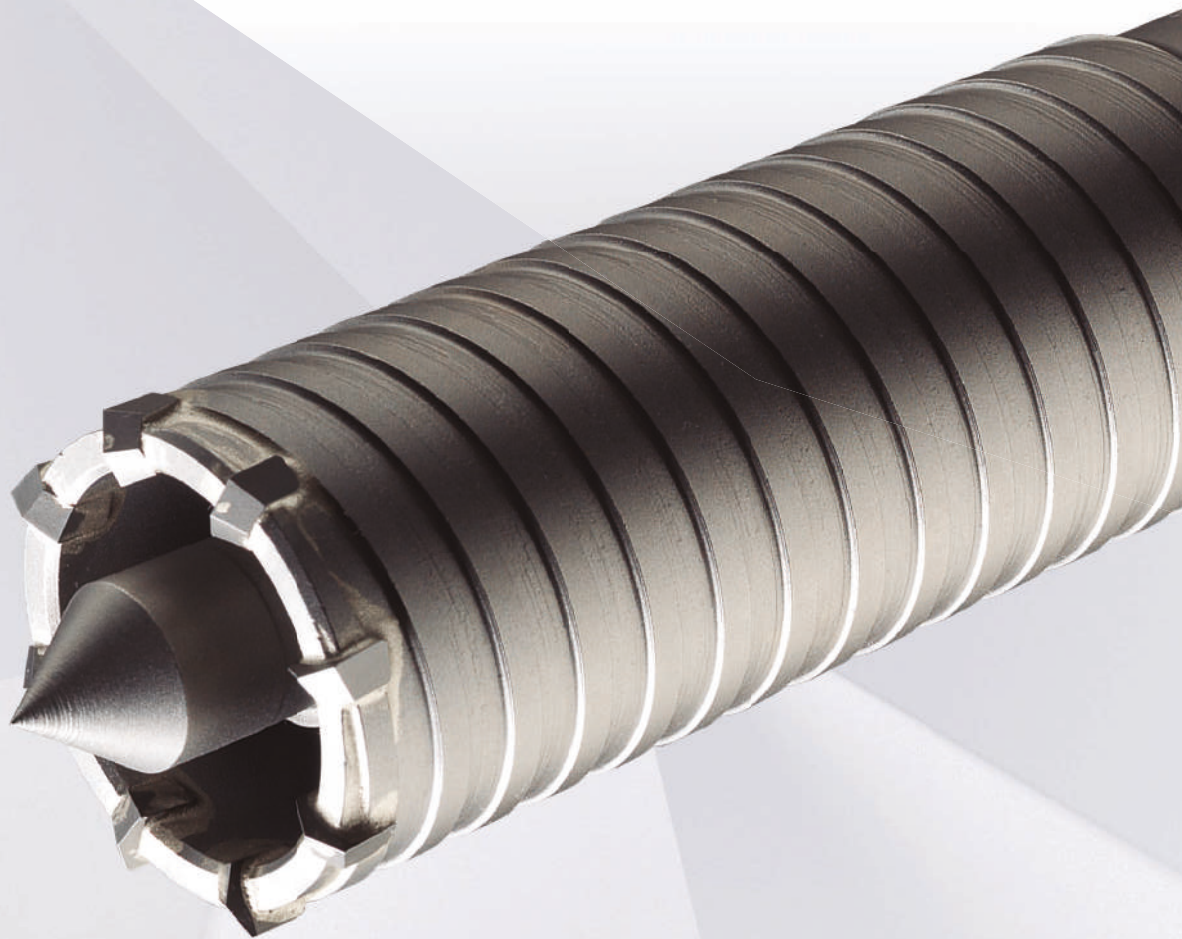


# CONSTRUCTION COREBITS



**BLUE-MASTER<sup>®</sup>**  
*by celesa*

CUTTING TECHNOLOGIES

**EXTRA PROFESSIONAL SERIES SDS PLUS SHANK CARBIDE TIPPED CORE BIT**

Holesaws

Pink

Ref. 600W


**CARBIDE  
TIPPED**

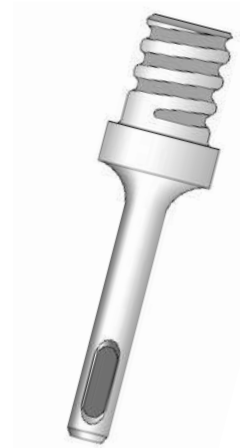
**80 mm  
CUTTING  
CAPACITY**


- These core bits are made of three parts that can be ordered separately:
  - The core bit with the diameters shown below.
  - SDS Plus arbor with special round thread in different lengths.
  - Centre pin.
- This tool is not suitable to drill metal, tile nor reinforced concrete.
- The core bit must be removed from the hole in rotary movement to avoid teeth damage
- When using long arbors it is necessary to pre-drill with a shorter arbor.
- 700 R.P.M. in hammer mode

600W		
	Ø mm	€
600W25C	25	80,44*
600W29C	29	85,78*
600W32C	32	95,47*
600W35C	35	106,11*
600W45C	45	133,97*
600W55C	55	149,95*
600W60C	60	161,84*
600W65C	65	172,49*
600W70C	70	185,33*
600W75C	75	198,16*
600W80C	80	210,99*
600W90C	90	241,05*
600W100C	100	268,90*

- Price does not include arbor nor center pin.

\* Till end of stock



**HUGE INCREASE OF THE CORE BIT  
RESISTANCE DUE TO  
EXTREMELY ROBUSTE SHANK**



Ref. 600WSDS1105



Ref. 600WSDS1200



Ref. 600WSDS1300



Ref. 600WSDS2105



Ref. 600WSDS2200



Ref. 600WSDS2300



Ref. 600WP

**ARBORS FOR EXTRA PROFESSIONAL CORE BITS**

	DESCRIPTION	CAPACITY Ø mm	€
600WSDS1105	SDS Plus arbor 105 mm	25 - 38	21,78
600WSDS1200	SDS Plus arbor 200 mm	25 - 38	26,96
600WSDS1300	SDS Plus arbor 300 mm	25 - 38	32,01
600WSDS2105	SDS Plus arbor 105 mm	45 - 100	24,37
600WSDS2200	SDS Plus arbor 200 mm	45 - 100	35,95
600WSDS2300	SDS Plus arbor 300 mm	45 - 100	47,39
600WP0	Center pin	25 - 29	30,80
600WP1	Center pin	32 - 38	30,80
600WP2	Center pin	45 - 100	30,80

**EXTRA PROFESSIONAL SERIES SDS PLUS/MAX SHANK CARBIDE TIPPED CORE BIT**

Ref. CW



**CARBIDE TIPPED**



**95 mm CUTTING CAPACITY**



- These core bits are made of three parts that can be ordered separately:
  - The core bit with the diameters shown below.
  - SDS Plus & SDS Max arbor with special round thread in different lengths.
  - Centre pin.
- This tool is not suitable to drill metal, tile or reinforced concrete.
- When using long arbors it is necessary to pre-drill with a shorter arbor.

	CW	
	Ø mm	€
CW25	25	62,44
CW27	27	63,30
CW30	30	72,65
CW35	35	80,15
CW40	40	92,57
CW45	45	107,02
CW50	50	118,96
CW60	60	135,07
CW65	65	162,55
CW68	68	172,43
CW70	70	177,18
CW75	75	190,46
CW80	80	208,20
CW90	90	215,68
CW95	95	250,25
CW100	100	275,55
CW105	105	294,79
CW110	110	325,81
CW115	115	362,48
CW120	120	362,48
CW130	130	413,61
CW140	140	476,01
CW150	150	497,18
CW160	160	565,94
CW170	170	614,61
CW180	180	666,44
CW190	190	764,26
CW200	200	814,54



**HUGE INCREASE OF THE CORE BIT RESISTANCE DUE TO EXTREMELY ROBUSTE SHANK**

\* Price does not include arbor nor center pin.



Ref. CWSDS-105



Ref. CWSDS-200



Ref. CWSMAX-105



Ref. CWSMAX-200



Ref. CWBR

**ARBORS FOR EXTRA PROFESSIONAL CORE BITS**

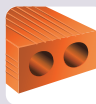
	DESCRIPTION	CAPACITY Ø mm	€
CWSDS-105	SDS Plus arbor 105 mm	25 - 200	31,66
CWSDS-200	SDS Plus arbor 200 mm	25 - 200	49,83
CWSDS-300	SDS Plus arbor 300 mm	25 - 200	65,93
CWSDS-450	SDS Plus arbor 450 mm	25 - 200	89,29
CWSMAX-200	SDS Max arbor 200 mm	25 - 200	49,83
CWSMAX-300	SDS Max arbor 300 mm	25 - 200	65,93
CWSMAX-450	SDS Max arbor 450 mm	25 - 200	89,29
CWBR	Pilot drill Ø10 x 160 mm	25 - 200	18,99

**CARBIDE TIPPED CONSTRUCTION CORE BIT Ø 11 mm. HEXAGONAL AND SDS PLUS SHANK**

Holesaws

Pink

Ref. HA


**CARBIDE  
TIPPED**

**54 mm  
CUTTING  
CAPACITY**


- These core bits are made of three parts that can be ordered separately:
  - The core bit with the diameters shown below.
  - Arbors: Thread M16 x 2. Available SDS PLUS and hexagonal shank.
  - Pilot drill Ø 8 mm.
- This tool is not suitable to drill metal, tile nor reinforced concrete.
- When using long arbors it is necessary to pre-drill with a shorter arbor.
- 700 R.P.M. in hammer mode

**11mm HEXAGONAL SHANK ARBORS**


	HA		
	Ø mm	Z	€
HA25	25	4	57,79
HA30	30	6	61,97
HA35	35	6	66,47
HA40	40	6	72,46
HA50	50	6	83,10
HA68	68	6	92,47
HA82	82	6	120,36
HA90	90	6	141,69
HA100	100	6	160,64
HA112	112	6	193,70

\* Price does not include arbor nor pilot drill.

	DESCRIPTION	CAPACITY Ø mm	€
HA11X78	Short shank 78 mm	Drill chuck	29,05
HA11X220	Long shank 220 mm	until 13 mm	40,76
HA11X370	Extra long shank 370mm	capacity	49,56

**SDS PLUS SHANK ARBORS**


	DESCRIPTION	€
HA105SDS	Short shank SDS-PLUS 105 mm	34,83
HA220SDS	Long shank SDS-PLUS 220 mm	46,63
HA370SDS	Extra long shank SDS-PLUS 370 mm	56,46

**Ø 8 x 120 mm PILOT DRILL**

**HA8X120**  
**7,35 €**
**ONE PIECE "NO BREAKING" SDS PLUS SHANK PILOT DRILL**


	DESCRIPTION	€
HA175SDSM	Short shank SDS-PLUS 175 mm	78,72
HA340SDSM	Long shank SDS-PLUS 340 mm	102,69
HA440SDSM	Extra long. SDS-PLUS 440 mm	120,14

**HEXAGONAL & SDS PLUS SHANK CARBIDE TIPPED LIGHT CONSTRUCTION CORE BIT**

Ref. MD



**CARBIDE TIPPED**



**60 mm CUTTING CAPACITY**



- These core bits are made of three parts that can be ordered separately:
  - The core bit with the diameters shown below.
  - Arbors: Thread M16 x 2. Available SDS PLUS and hexagonal shank.
  - Pilot drill Ø 8 mm.
- This tool is not suitable to drill metal, tile nor reinforced concrete.
- When using long arbors it is necessary to pre-drill with a shorter arbor.
- 700 R.P.M. in hammer mode

**11mm HEXAGONAL SHANK ARBORS**

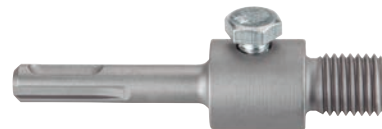


	MD	
	Ø mm	€
MD22SH	22	33,70
MD25SH	25	40,98
MD27SH	27	41,56
MD30SH	30	47,68
MD35SH	35	52,62
MD40SH	40	60,76
MD45SH	45	67,17
MD50SH	50	69,20
MD60SH	60	78,88
MD65SH	65	79,34
MD68SH	68	79,43
MD70SH	70	103,38
MD75SH	75	111,13
MD80SH	80	113,90
MD90SH	90	117,99
MD95SH	95	127,77
MD100SH	100	134,23
MD120SH	120	159,76

\* Price does not include arbor nor pilot drill.

	DESCRIPTION	CAPACITY Ø mm	€
HA11X78	Short shank 78 mm	Drill chuck	29,05
HA11X220	Long shank 220 mm	until 13 mm	40,76
HA11X370	Extra long shank 370mm	capacity	49,56

**SDS PLUS SHANK ARBORS**



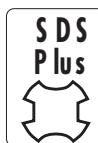
	DESCRIPTION	€
HA105SDS	Short shank SDS-PLUS 105 mm	34,83
HA220SDS	Long shank SDS-PLUS 220 mm	46,63
HA370SDS	Extra long shank SDS-PLUS 370 mm	56,46

**Ø 8 x 120 mm PILOT DRILL**



HA8X120  
7,35 €

**ONE PIECE "NO BREAKING" SDS PLUS SHANK PILOT DRILL**



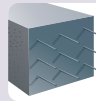
	DESCRIPTION	€
HA175SDSM	Short shank SDS-PLUS 175 mm	78,72
HA340SDSM	Long shank SDS-PLUS 340 mm	102,69
HA440SDSM	Extra long. SDS-PLUS 440 mm	120,14

**HEAVY DUTY CONSTRUCTION CORE BIT FOR REINFORCED CONCRETE SDS MAX**

Holesaws

Pink

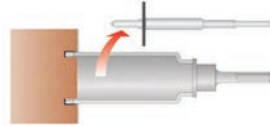
Ref. MH


**CARBIDE  
TIPPED**

**100 mm  
CUTTING  
CAPACITY**


- 500 Rpm in most applications.
- Light axial pressure which must be reduced when we start cutting the rebar.
- Remove the center pin when the CORE BIT has penetrated into the concrete.
- Not suitable for metal or ceramic.
- Work in hammer mode.



1- Use the center pin when start drilling.



2- We remove the center pin when the CORE BIT has penetrated slightly.



	MH		
	Ø mm	Z	€
MH25	25	4	123,85
MH29	29	4	132,16
MH32	32	4	147,12
MH35	35	4	163,54
MH38	38	4	181,69
MH45	45	6	206,38
MH50	50	8	219,64
MH55	55	10	231,28
MH60	60	10	249,43
MH65	65	10	265,82
MH70	70	12	285,78
MH75	75	12	305,52
MH80	80	12	325,30
MH90	90	14	371,50
MH100	100	16	414,55
MH120	120	18	503,61
MH150	150	24	705,61



**HUGE INCREASE IN SAW  
RESISTANCE DUE TO  
EXTREMELY ROBUSTE SHANK**

Price does not include arbor nor center pin.

**ARBORS FOR EXTRA PROFESSIONAL CORE BITS**

	DESCRIPTION	CAPACITY Ø mm	€
MHSK1MAX	SDS-MAX arbor 300 mm	25 - 35	101,61
MHSK2MAX	SDS-MAX arbor 300 mm	38 - 150	105,83
MHCPO	Center pin N° 0	25 - 29	56,46
MHCP1	Center pin N° 1	32 - 35	56,46
MHCP2	Center pin N° 2	38 - 150	56,46

Ref. MHSK1MAX

Ref. MHCPO

**HEAVY DUTY CONSTRUCTION CARBIDE TIPPED CORE BIT THREADED ANTI-BREAKAGE SHANK**

Ref. HAR



**CARBIDE TIPPED**



**80 mm CUTTING CAPACITY**



- These core bits are made of three parts that can be ordered separately:
  - The core bit with the diameters shown below.
  - Arbor in round thread: Available in SDS MAX, Spline and hexagonal (19 and 13 mm)
  - HAR Ø 11mm pilot drill.
- This tool is not suitable to drill metal, tile or reinforced concrete.
- The core bit must be removed from the hole rotary movement to avoid teeth damage
- When long arbors are required it is necessary to pre-drill with a shorter arbor.
- Must be used with a cutting speed of 600RPM in hammer mode.

	HAR	
	Ø mm	€
HAR050	50	162,35
HAR055	55	175,68
HAR068	68	186,35
HAR082	82	258,35
HAR090	90	298,38
HAR100	100	322,38
HAR125	125	362,37
HAR150	150	469,07

Price includes pilot drill.

**SDS-MAX SHANK ARBORS**



	DESCRIPTION	€
HARMAX200	SDS-MAX shank 200 mm	75,54
HARMAX460	SDS-MAX shank 460 mm	89,02

**13/19 mm HEXAGONAL SHANK ARBORS**



	DESCRIPTION	€
HAR13X200	Hexagonal shank 13mm 200 mm	75,54
HAR13X460	Hexagonal shank 13mm 460 mm	89,02
HAR19X200	Hexagonal shank 19mm 200 mm	48,96

**SPLINE SHANK ARBORS**



	DESCRIPTION	€
HAREST200	Spline 200 mm	75,54
HAREST460	Spline 460 mm	89,02

- The shank thread Ref. HAR is special. It is not compatible with other holesaws and can only be used with the ones showed in this page.

**Ø 11x135mm PILOT DRILL FOR HAR CORE BITS**



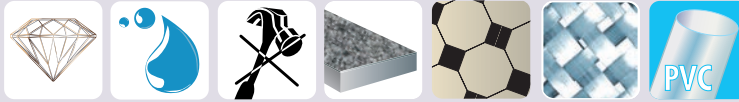
HAR11X135  
15,80 €

**ELECTRODEPOSITED DIAMOND HOLESAW FOR GRANITE, MARBLE, TILE & REINFORCED PLASTIC**

Holesaws

Grey  
Pink

Ref. CDE  
Ref. CMAD



**40 mm CUTTING CAPACITY**

**MONOBLOCK COREBIT AND ARBOR**



		CDE	
	Ø mm		€
CDE12	12		55,32
CDE14	14		55,85
CDE16	16		59,03
CDE18	18		62,21
CDE20	20		70,52
CDE25	25		78,14
CDE28	28		81,13
CDE30	30		86,04
CDE32	32		90,12
CDE35	35		94,09
CDE40	40		98,44
CDE43	43		99,66
CDE45	45		100,16
CDE50	50		100,45
CDE65	65		118,61
CDE68	68		133,27
CDE75	75		163,09
CDE80	80		172,32
CDE90	90		195,21
CDE100	100		195,21
CDE120	120		229,08

\* Price includes arbor and pilot drill

**INTERCHANGEABLE THREAD SHANK**

- Serial drilling of fiberglass, carbon, polyester....
- The pilot drill ejects the core automatically



		CMAD	
	Ø mm		€
CMAD20	20		142,06
CMAD22	22		148,71
CMAD25	25		153,52
CMAD28	28		156,81
CMAD30	30		159,08
CMAD32	32		163,83
CMAD35	35		189,04
CMAD40	40		198,77
CMAD45	45		210,23
CMAD50	50		221,46

\* Price of the arbor is not included

**PILOT DRILL Ø 5 mm**



BW90500  
26,50 €

- Remove the drill when the CORE BIT has already penetrated in the material.
  - We recommend to use the GCD guide for holesaws.
  - Remove diamond holesaw from the hole in rotary movement in order to avoid tip breaking.
  - Must be used with water cooling.
  - References RPM:
- Ø 100mm: 400 RPM  
Ø 50mm: 800 RPM  
Ø 20mm: 1300 RPM
- Exclusively in rotary mode, no hammer.



**HOLESAWS GUIDE**

GCD  
43,61 €

Capacity: Ø 10 - 83 mm

**CAN FOR COOLING**

GBP  
9,73 €

Capacity: 1,1 l.

**STRAIGHT SHANK ARBOR WITH INTERNAL COOLING**

	DESCRIPTION	€
350MC13	Straight shank arbor Ø 13 mm	227,40
350MC16	Straight shank arbor Ø 16 mm	227,40



GCD



GBP



**DIAMOND HOLE SAW**

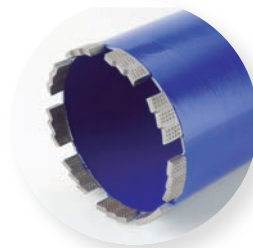
Ref. CHH



**300-450  
CUTTING  
CAPACITY**

Holesaws

Pink



1" 1/4

- New segmented diamond hole saw for heavy works in construction.
- High performance in intensive works in reinforced concrete, granite, stone, brick and asphalt.
- Cool with plenty of water
- Efficient and constant work that enlarges the lifetime of the tool and the machine.
- More resistant segments with more diamond content to provide the maximum performance
- Better removal of debris so the effort of the machine is reduced.
- Excellent management of the effort in high capacity machines.

	Ø mm	L1 mm	L2 mm	Z	KW	CHH €
CHH32	32	380	300	3	0,7>1,2	146,15
CHH42	42	380	300	4	0,7>1,2	159,44
CHH52	52	520	450	5	0,7>1,2	172,74
CHH62	62	520	450	6	0,7>1,2	199,32
CHH72	72	520	450	6	0,7>1,2	239,21
CHH82	82	520	450	7	1,2>2,3	252,51
CHH92	92	520	450	8	1,2>2,3	292,37
CHH102	102	520	450	9	1,2>2,3	318,98
CHH112	112	520	450	9	1,2>2,3	332,26
CHH122	122	520	450	10	1,2>2,3	358,84
CHH127	127	520	450	11	1,2>2,3	378,71
CHH132	132	520	450	11	1,2>2,3	398,72
CHH142	142	520	450	12	1,2>2,3	465,18
CHH152	152	520	450	12	1,2>2,3	465,18
CHH162	162	520	450	12	2,3>3,9	491,78
CHH172	172	520	450	13	2,3>3,9	558,23
CHH182	182	520	450	13	2,3>3,9	571,53
CHH200	200	520	450	15	2,3>3,9	638,00
CHH225	225	520	450	15	2,3>3,9	757,62
CHH250	250	520	450	16	2,3>3,9	837,37
CHH300	300	520	450	17	2,3>3,9	1.063,37

**CSE DIAMOND HOLESAWS FOR GRANITE, MARBLE AND HARD CERAMICS**

Holesaws

Grey

Pink

Ref. CSE

**SERIE  
DIAMOND**



**M 14x2**

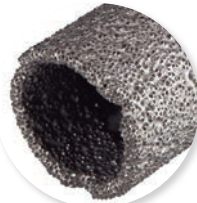
**35 mm  
CUTTING  
CAPACITY**



**FOR DRY  
DRILLING**



M14x2  
Special for angle grinder



- Female thread M14x2 on the back side to be fixed on an angle grinder.
- These Holesaws can work ceramics without water. Nevertheless, using water increases dramatically the performance.
- Start drilling with an angle between 15 and 30° and afterwards horizontally. No need to guide.
- Drill the ceramics making soft rotary movements.
- Remove the core after each operation.

	Ø mm	CSE €
CSE05*	5	54,60
CSE06*	6	54,76
CSE08*	8	55,22
CSE10*	10	55,83
CSE12*	12	56,98
CSE14*	14	57,52
CSE16	16	60,79
CSE18	18	64,07
CSE20	20	72,62
CSE22	22	75,59
CSE25	25	80,46
CSE27	27	83,32
CSE30	30	88,61
CSE32	32	92,80
CSE35	35	96,89
CSE38	38	98,57
CSE40	40	101,37
CSE45	45	103,15
CSE50	50	103,46
CSE51	51	107,39
CSE55	55	109,45
CSE57	57	115,55
CSE60	60	119,28
CSE65	65	122,14
CSE67	67	131,32
CSE68	68	137,25
CSE70	70	150,44
CSE75	75	167,95
CSE80	80	177,47
CSE83	83	200,55

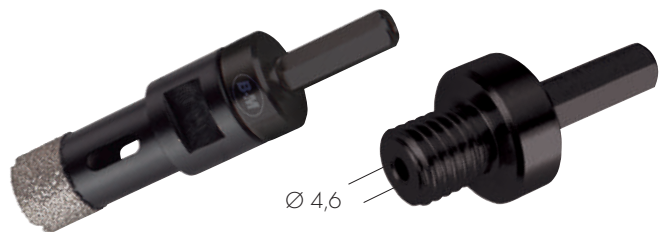
These prices don't include the arbor  
\* Ø 5 a 14 mm The holesaw contains cooling vegetal paraffin

**ADAPTORS FOR CSE**



	DESCRIPTION	L mm	€
ALCSE50	50mm Extension CSE M14X2,00 Ø22mm	50	14,63
ALCSE75	75mm Extension CSE M14X2,00 Ø22mm	75	16,73
ADCSE-MAX	Adaptor CSE M14X2,00 SDS MAX	113	36,36
ADCSE-PLUS	Adaptor CSE M14X2,00 SDS PLUS	90	20,63

**HEX ARBOR FOR CSE**



**ADCSE  
14,95 €**

**CAN OF PARAFFIN**



20 cm3

**PACSE  
8,82 €**

**OPTIONAL PILOT DRILL FOR ARBOR REF. ADCSE**

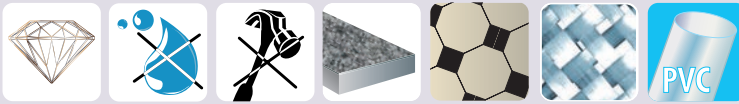


**BW90500  
26,50 €**



**VACUUM BRAZED DIAMOND HOLESAWS FOR GRANITE, MARBLE AND HARD CERAMICS**

Ref. CSE



**35 mm CUTTING CAPACITY**

**Dry Working**

**Diamond series**

**CSE HOLESAWS + 1 ARBOR SET + PARAFFIN**



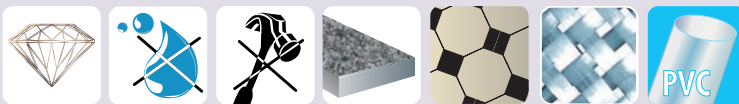
CSE9328

4 Holesaws CSE: Ø 5 - 6 - 8 - 10 mm  
1 Arbor  
1 Paraffin can 20 cm<sup>3</sup>

185,68 €

**DIAMOND COUNTERSINKS FOR GRANITE, MARBLE AND HARD CERAMICS**

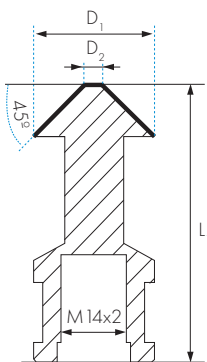
Ref. AVD



**M 14 x 2**

**Dry Working**

**Diamond series**



	D1 mm	D2 mm	α	L1 mm		AVD €
AVD0630	6,30	1,50	90°	45	M14X2	83,23
AVD0830	8,30	2,00	90°	50	M14X2	83,23
AVD1040	10,40	2,50	90°	50	M14X2	83,23
AVD1240	12,40	2,80	90°	56	M14X2	91,55
AVD1650	16,50	3,20	90°	60	M14X2	99,87
AVD2050	20,50	3,50	90°	63	M14X2	104,04
AVD2500	25,00	3,80	90°	67	M14X2	130,05
AVD3100	31,00	4,20	90°	71	M14X2	161,26

- These countersinks can work ceramics without water. Nevertheless, using with water increases heavily the performance.
- Female thread M14x2 on the back side to be fixed on an angle grinder.

## GRIT EDGE HOLE SAW FOR NON METALLIC MATERIALS

Ref. MG

30 mm  
CUTTING  
CAPACITY

## VERY CLEAN FINISHING

- Ideal for use in agglomerate and wood



## HEXAGONAL SHANK ARBORS FOR Ref. MG HOLESAWS

	Ø mm	PACKAGING	€
B5519-CM	16 - 29	Box	18,76
B5546-CM	32 - 114	Box	28,46
B5519-CMS	16 - 29	Blister	18,76
B5546-CMS	32 - 114	Blister	28,46



## CARBIDE TIPPED PILOT DRILLS

Ø 6,35 mm

	Ltmm	PACKAGING	€
B8537	82 mm	Box	5,41
B8538	97 mm	Box	5,41
B8537S	82 mm	Blister	6,75
B8538S	97 mm	Blister	6,75

Ø mm	Carton		Blister	
	Ref.	€	Ref.	€
16	MG16	17,96	MG16B	17,96
19	MG19	18,86	MG19B	18,86
20	MG20	19,34	MG20B	19,34
22	MG22	19,34	MG22B	19,34
25	MG25	19,77	MG25B	19,77
29	MG29	21,32	MG29B	21,32
32	MG32	21,60	MG32B	21,60
35	MG35	22,35	MG35B	22,35
38	MG38	24,39	MG38B	24,39
44	MG44	26,06	MG44B	26,06
48	MG48	26,58	MG48B	26,58
51	MG51	26,58	MG51B	26,58
54	MG54	27,72	MG54B	27,72
57	MG57	27,84	MG57B	27,84
60	MG60	29,79	MG60B	29,79
64	MG64	29,79	MG64B	29,79
70	MG70	37,92	MG70B	37,92
76	MG76	40,68	MG76B	40,68
83	MG83	41,55	MG83B	41,55
86	MG86	43,64		
95	MG95	46,15		
102	MG102	47,02		
114	MG114	48,61		

\* Price does not include arbor nor pilot drill.

## MASTER-GRIT HOLESAWS BOXES



Ref. MG9573



Ref. MG9572

MG9571 6 Holesaws MG:  
22 - 35 - 51 - 60 - 64 - 70 mm

## Content:

- 1 Arbor Ref. B5519-CM ⬡ 9,5 Capacity 14-30
- 1 Arbor Ref. B5546-CM ⬡ 9,5 Capacity 32-250
- 1 Arbor adapter Ref. B5511

177,24 €

MG9572 10 Holesaws MG:  
20-22-25-32-35-38-44-60-70-76 mm

## Content:

- 1 Arbor Ref. B5519-CM ⬡ 9,5 Capacity 14-30
- 1 Arbor Ref. B5546-CM ⬡ 9,5 Capacity 32-250
- 1 Arbor adapter Ref. B5511

253,62 €

MG9573 7 Holesaws MG:  
20 - 25 - 29 - 38 - 44 - 60 - 70 mm

## Content:

- 1 Arbor Ref. B5519-CM ⬡ 9,5 Capacity 14-30
- 1 Arbor Ref. B5546-CM ⬡ 9,5 Capacity 32-250
- 1 Arbor adapter Ref. B5511

187,49 €

**HIGH PERFORMANCE CARBIDE TIPPED HOLESAW FOR WOOD**

Ref. CM

**CARBIDE TIPPED**



**60 mm CUTTING CAPACITY**



- High cutting speed.
- Great lateral chip evacuation.
- Long life even in abrasive material.
- Optimal hole finishing.
- Exclusively in rotary mode, no hammer.



	CM	
	Ø mm	€
CM022	22	29,69
CM025	25	32,12
CM027	27	33,61
CM030	30	36,91
CM032	32	40,10
CM035	35	40,10
CM038	38	48,07
CM040	40	48,07
CM045	45	52,14
CM050	50	56,87
CM055	55	59,82
CM060	60	65,12
CM062	62	73,35
CM065	65	73,35
CM068	68	80,78
CM070	70	83,74
CM075	75	95,73
CM080	80	95,73
CM090	90	105,53
CM095	95	118,20
CM100	100	118,20
CM110	110	139,03
CM120	120	156,10
CM125	125	165,90
CM130	130	189,30
CM140	140	212,20
CM150	150	218,95
CM160	160	235,09

CUTTING SPEED	
CAPACITY Ø mm	R.P.M.
22 - 27	2.800
30 - 38	2.300
40 - 50	1.800
55 - 60	1.500
62 - 80	1.000
90 - 100	700
108 - 125	500

\* Price includes arbor and pilot drill

**ARBORS FOR WOOD HOLESAWS**



Ref. CMB5520



Ref. CMB5545



Ref. CMB556SDS

	DESCRIPTION	€
CMB5520	Straight shank 11 mm Ø 22 - 32 mm	19,90
CMB5529SDS	Straight shank Ø 35 - 125 mm	22,55
CMB5545	SDS PLUS shank 11 mm Ø 45 - 160 mm	26,92
CMB556SDS	SDS PLUS shank Ø 45 - 160 mm	41,76

**PILOT DRILL Ø 6,35 x 107 mm**



Ref. B8535

B8535	6,30 €
-------	--------

**CIRCLE CUTTING HOLE CUTTERS**

**200 mm**

**DRYWALL  
CAST**



- Multipurpose circle cutting hole cutters with adjustable blade.
- To cut large circles in ceilings, walls, and floors.
- Chip holding system to allow clean work.
- Works in aluminium, brass and metal up to 1 mm thickness.
- Minimum cutting diameter: 40mm
- Blade CL12-BT002 installed and CL12-BH002 provided in the case.



**CIRCLE CUTTING HOLE CUTTERS 200 mm**

TB-9600-200  
241,20 €

**SPARE PARTS**



CL12-BT002



CL12-BH002

	DESCRIPTION	€
CL12-BH002	Blade for wood, pladur, laminated panels, etc	20,09
CL12-BT002	Blade for plaster and metals up to 1mm thickness	25,43

**CIRCLE CUTTING HOLE CUTTERS**

**220 mm & 285 mm**

**DRYWALL  
CAST**



- Multipurpose circle cutting hole cutters with adjustable blade.
- To cut large circles in ceilings, walls, and floors.
- Chip holding system to allow clean work.
- Works in aluminium, brass and metal up to 1 mm thickness.
- Minimum cutting diameter: 40mm
- Blade CL12HSS installed

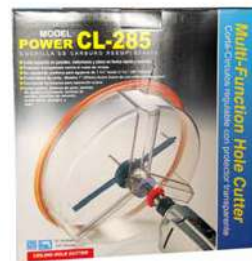


**CIRCLE CUTTING HOLE CUTTERS 220 mm**

CL220  
252,53 €

**CIRCLE CUTTING HOLE CUTTERS 285 mm**

CL285  
290,40 €



**SPARE PARTS**

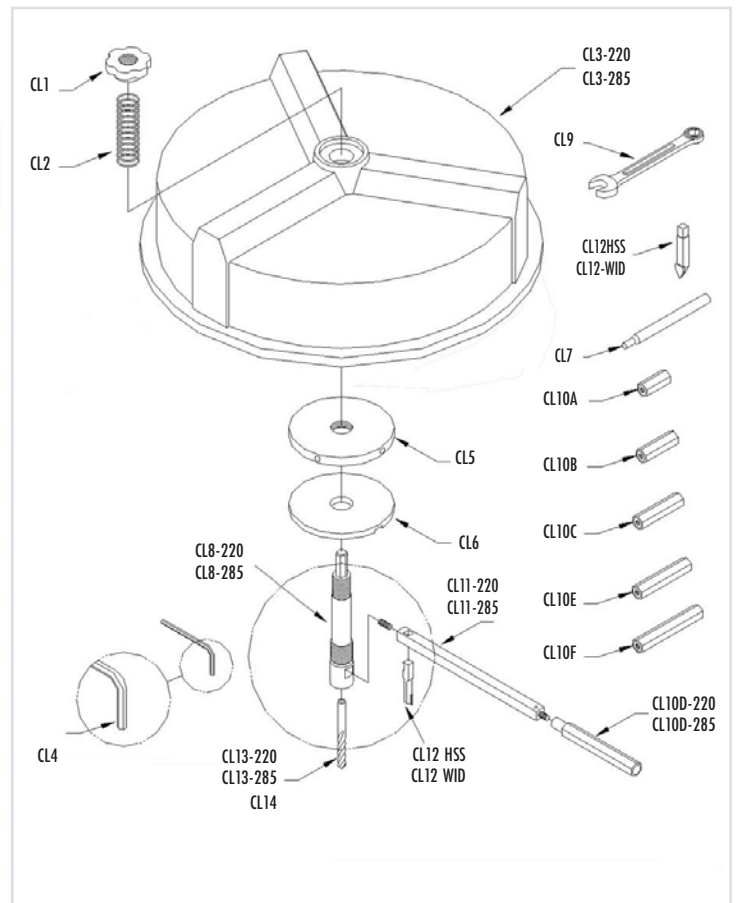


CL12HSS: Blade for wood, plaster, laminated panels, etc



CL12WID: Blade metals up to 1mm thickness

	DESCRIPTION	€
CL1	Hexagonal nut 220 / 285	9,22
CL2	Compression spring 220 / 285	2,59
CL3-220	Cowl with bearing 220	92,16
CL3-285	Cowl with bearing 285	137,21
CL4	Allen key 220/285 (3 mm)	2,61
CL5	Fixed plate 220 / 285	17,95
CL6	Adjusting plate 220 / 285	7,68
CL7	Adjusting rod 220 / 285	5,19
CL8-220	Vertical axle 220	40,99
CL8-285	Vertical axle 285	43,58
CL9	Combination wrench 220 / 285	7,68
CL10A	Balance f/cl220-cl285-cl410 of 33 mm.	3,70
CL10B	Balance f/cl220-cl285-cl410 of 40 mm.	4,19
CL10C	Balance f/cl220-cl285-cl410 of 56 mm.	4,87
CL10D-220	Balance f/cl220 of 74 mm.	5,19
CL10D-285	Balance f/cl285-cl410 of 74 mm.	5,19
CL10E	Balance f/cl285-cl410 of 95 mm.	6,71
CL10F	Balance f/cl285-cl410 of 120 mm.	8,90
CL10-285	Balance cl285 (6pcs)	15,26
CL11-220	Transversal axle for 220	17,95
CL11-285	Transversal axle for 285	25,32
CL12HSS	Blade for wood, pladur, laminated panels	20,53
CL12WID	Blade metals up to 1 mm thickness	26,91
CL13-220	Pilot drill 220	17,13
CL13-285	Pilot drill 285	17,70
CL14	HSS pilot drill 285	19,41



**CIRCLE CUTTING HOLE CUTTERS**

**410 mm**

**DRYWALL  
CAST**



- For bigger diameters.
- High resistant carbide tip with innovative geometry.
- Better hole finishing.
- The spare parts of holesaws 163 mm, 200 mm, 220 mm & 285 mm are valid for CL410 with exception of balances CL10G and CL10H.
- Blade CL12HSS installed



**CIRCLE CUTTING HOLE CUTTERS 410 mm**

CL410

493,77 €

**SPARE PARTS**

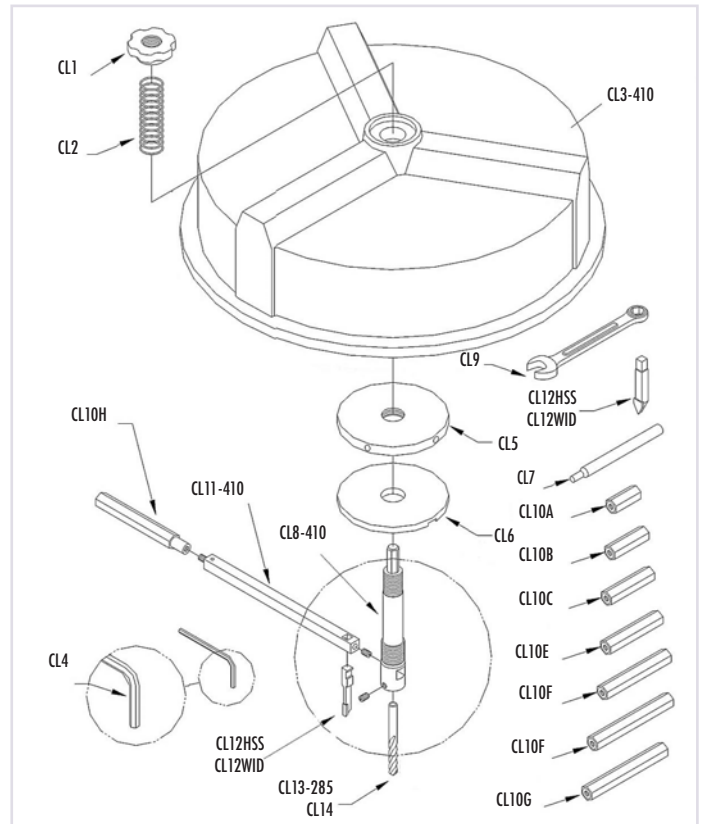


CL12HSS: blade for wood, plaster, laminated panels, etc



CL12WID: blade metals up to 1mm thickness

	DESCRIPTION	€
CL1	Hexagonal nut 220 / 285 & 410	9,22
CL2	Compression spring 220, 285 & 410	2,59
CL3-410	Cowl with bearing 410	166,50
CL4	Allen key 220/285 (3 mm)	2,61
CL5	Fixed plate 220, 285 & 410	17,95
CL6	Adjusting plate 220, 285 & 410	7,68
CL7	Vertical axle 220, 285 & 410	5,19
CL8-410	Vertical axle 410	61,43
CL9	Combination wrench 220, 285 & 410	7,68
CL10A	Balance P/CL220-CL285-CL410 of 33 mm	3,70
CL10B	Balance P/CL220-CL285-CL410 of 40 mm	4,19
CL10C	Balance P/CL220-CL285-CL410 of 56 mm	4,87
CL10E	Balance P/CL285-CL410 of 95 mm	6,71
CL10F	Balance P/CL285-CL410 of 120 mm	8,90
CL10G	Balance P/CL410 of 145 mm	10,99
CL10H	Balance P/CL410 D of e 175 mm	13,92
CL11-410	Transversal axle for CL410	36,73
CL12HSS	Cutter	20,53
CL12WID	Cutter	26,91
CL13-285	Solid carbide drill guide 285 & 410	17,70
CL14	HSS pilot drill 285 & 410	19,41





**DIAMOND HOLESAW FOR CONCRETE WITH REBARS WITH QUICK CHANGE POLY-CLIC**

Ref. CDH



**150 mm**  
CUTTING  
CAPACITY



- Exclusively in rotary mode, no percussion.
- Must be used with water cooling.
- High speed (2500-3000 R.P.M.).
- Remove the drill when the CORE BIT has already penetrated in the material.
- We recommend to use the GCD guide for holesaws.
- Remove diamond holesaw from the hole in rotary movement in order to avoid tip breakages.



1- Use Center pin to start drilling

2- We remove the center pin when the CORE BIT has penetrated slightly.



	CDH	
	Ø mm	€
CDH25	25	118,84 *
CDH29	29	118,84 *
CDH32	32	118,84 *
CDH35	35	118,84 *
CDH38	38	118,84 *
CDH45	45	118,84 *
CDH50	50	131,75 *
CDH55	55	136,92 *
CDH60	60	142,09 *
CDH65	65	148,54 *
CDH70	70	161,46 *
CDH75	75	174,38 *
CDH80	80	187,29 *
CDH90	90	215,71 *
CDH100	100	245,41 *
CDH110	110	264,80 *
CDH120	120	284,17 *
CDH170	170	393,96 *
CDH220	220	527,00 *

Price does not include arbor nor center pin.

\* Till end of stock



**CAN FOR COOLING**

Capacity: 1,1 l.

GBP
9,73 €

**ACCESSORIES**

	DESCRIPTION	CAPACITY	€
CDHAPH	Hexagonal shank short	25 - 45	129,16 *
CDHAPSDS	SDS PLUS short	25 - 45	129,16 *
CDHAPH300	Hexagonal 300mm	25 - 45	135,63 *
CDHAPSDS300	SDS PLUS 300mm	25 - 45	135,63 *
CDHAGH	Hexagonal shank short	50 - 220	148,54 *
CDHAGSDS	SDS PLUS corto	50 - 220	148,54 *
CDHAGH300	Hexagonal 300mm	50 - 220	161,46 *
CDHAGSDS300	SDS PLUS 300mm	50 - 220	161,46 *
CDHBP	centering pin	25 - 220	18,08 *


\* Till end of stock

## No.1 IN CONSTRUCTION MATERIALS DRILLING

TILE RANGE					
Standard Series <b>BW7</b>	Professional Series <b>BW9</b>	Diamond (Water) <b>CPH</b>	Diamond (Dry) <b>CPS</b>	Diamond Holesaw (Dry) <b>CSE</b>	High Performance Diamond
					
Page 464	463	466	465	582	462

CYLINDRICAL RANGE					CYLINDRICAL 
Standard Series <b>BW1</b>	Professional Series <b>BW6</b>	Extra Professional Series <b>BW16</b>	Delta 3 Plus <b>BW35</b>	Multi Purpose <b>BW8</b>	
			<i>Delta 3 plus</i> 		
Page 468	470	473	474	467	

SDS PLUS RANGE						SDS Plus 
Standard Series <b>W08</b>	Professional Series <b>W05</b>	4 Cuts Series <b>W55</b>	Reinforced Concrete Series Solid Carbide Head <b>W88</b>	Reinforced Concrete Series Solid Carbide Head <b>W77</b>	Multi Purpose <b>W99</b>	
			<i>DeltaTOP</i> 			
Page 476	478	480	<i>X3</i> 482	<i>X4</i> 484	483	

SDS MAX RANGE			SDS Max 
Standard Series <b>QT</b>	Professional Series <b>AX</b>	Reinforced Concrete Series Solid Carbide Head <b>X4AX</b>	
		<i>X4</i> 	
Page 487	488	489	

