

**BLUE-MASTER<sup>®</sup>**  
by *celesa*



CONSTRUCTION  
COREBITS

**EXTRA PROFESSIONAL SERIES SDS PLUS SHANK CARBIDE TIPPED CORE BIT**

Holesaws

Pink

Ref. 600W


**CARBIDE  
TIPPED**

**80 mm  
CUTTING  
CAPACITY**


- These core bits are made of three parts that can be ordered separately:
  - The core bit with the diameters shown below.
  - SDS Plus arbor with special round thread in different lengths.
  - Centre pin.
- This tool is not suitable to drill metal, tile nor reinforced concrete.
- The core bit must be removed from the hole in rotary movement to avoid teeth damage
- When using long arbors it is necessary to pre-drill with a shorter arbor.
- 700 R.P.M. in hammer mode

	600W	
	Ø mm	€
600W25C	25	80,44*
600W29C	29	85,78*
600W65C	65	172,49*
600W70C	70	185,33*
600W75C	75	198,16*
600W80C	80	210,99*

- Price does not include arbor nor center pin.

\* Till end of stock


**HUGE INCREASE OF THE CORE BIT  
RESISTANCE DUE TO  
EXTREMELY ROBUST SHANK**


Ref. 600WSDS1105



Ref. 600WSDS1200



Ref. 600WSDS1300



Ref. 600WSDS2105



Ref. 600WSDS2200



Ref. 600WSDS2300



Ref. 600WP

**ARBORS FOR EXTRA PROFESSIONAL CORE BITS**

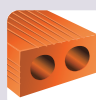
	DESCRIPTION	CAPACITY Ø mm	€
600WSDS1105	SDS Plus arbor 105 mm	25 - 38	21,78
600WSDS1200	SDS Plus arbor 200 mm	25 - 38	26,96
600WSDS1300	SDS Plus arbor 300 mm	25 - 38	32,01
600WSDS2105	SDS Plus arbor 105 mm	45 - 100	24,37
600WSDS2200	SDS Plus arbor 200 mm	45 - 100	35,95
600WSDS2300	SDS Plus arbor 300 mm	45 - 100	47,39
600WP0	Center pin	25 - 29	30,80
600WP1	Center pin	32 - 38	30,80
600WP2	Center pin	45 - 100	30,80

**EXTRA PROFESSIONAL SERIES SDS PLUS/MAX SHANK CARBIDE TIPPED CORE BIT**

Ref. CW



**CARBIDE TIPPED**



**95 mm CUTTING CAPACITY**



- These core bits are made of three parts that can be ordered separately:
  - The core bit with the diameters shown below.
  - SDS Plus & SDS Max arbor with special round thread in different lengths.
  - Centre pin.
- This tool is not suitable to drill metal, tile or reinforced concrete.
- When using long arbors it is necessary to pre-drill with a shorter arbor.

		CW
	Ø mm	€
CW25	25	64,94
CW27	27	65,83
CW30	30	75,56
CW35	35	83,36
CW40	40	96,26
CW45	45	111,30
CW50	50	123,71
CW60	60	140,47
CW65	65	169,06
CW68	68	179,34
CW70	70	184,27
CW75	75	198,06
CW80	80	216,53
CW90	90	224,31
CW95	95	260,26
CW100	100	286,58
CW105	105	306,57
CW110	110	338,84
CW115	115	376,97
CW120	120	376,97
CW130	130	430,15
CW140	140	495,06
CW150	150	517,07
CW160	160	588,58
CW170	170	639,19
CW180	180	693,10
CW190	190	794,85
CW200	200	847,12



**HUGE INCREASE OF THE CORE BIT RESISTANCE DUE TO EXTREMELY ROBUST SHANK**

\* Price does not include arbor nor center pin.



Ref. CWSDS-105



Ref. CWSDS-200



Ref. CWSMAX-105



Ref. CWSMAX-200



Ref. CWBR

**ARBORS FOR EXTRA PROFESSIONAL CORE BITS**

	DESCRIPTION	CAPACITY Ø mm	€
CWSDS-105	SDS Plus arbor 105 mm	25 - 200	32,93
CWSDS-200	SDS Plus arbor 200 mm	25 - 200	51,84
CWSDS-300	SDS Plus arbor 300 mm	25 - 200	68,57
CWSDS-450	SDS Plus arbor 450 mm	25 - 200	92,86
CWSMAX-200	SDS Max arbor 200 mm	25 - 200	51,84
CWSMAX-300	SDS Max arbor 300 mm	25 - 200	68,57
CWSMAX-450	SDS Max arbor 450 mm	25 - 200	92,86
CWBR	Pilot drill Ø10 x 160 mm	25 - 200	19,75

**CARBIDE TIPPED CONSTRUCTION CORE BIT Ø 11 mm. HEXAGONAL AND SDS PLUS SHANK**

Holesaws

Pink

Ref. HA


**CARBIDE  
TIPPED**

**54 mm  
CUTTING  
CAPACITY**


- These core bits are made of three parts that can be ordered separately:
  - The core bit with the diameters shown below.
  - Arbors: Thread M16 x 2. Available SDS PLUS and hexagonal shank.
  - Pilot drill Ø 8 mm.
- This tool is not suitable to drill metal, tile nor reinforced concrete.
- When using long arbors it is necessary to pre-drill with a shorter arbor.
- 700 R.P.M. in hammer mode

**11mm HEXAGONAL SHANK ARBORS**


HA			
	Ø mm	Z	€
HA25	25	4	<b>56,18</b>
HA30	30	6	<b>60,24</b>
HA35	35	6	<b>64,63</b>
HA40	40	6	<b>70,45</b>
HA45	45	6	<b>73,25</b>
HA50	50	6	<b>75,12</b>
HA60	60	6	<b>86,96</b>
HA68	68	6	<b>91,59</b>
HA70	70	6	<b>102,36</b>
HA80	80	6	<b>112,25</b>
HA90	90	6	<b>122,60</b>
HA100	100	6	<b>156,18</b>
HA115	115	6	<b>201,36</b>
HA125	125	6	<b>225,36</b>
HA130	130	6	<b>256,98</b>

\* Price does not include arbor nor pilot drill.

	DESCRIPTION	CAPACITY Ø mm	€
HA11X100	Short shank 100 mm	Drill chuck	<b>29,05</b>
HA11X220	Long shank 220 mm	until 13 mm	<b>39,64</b>
HA11X320	Extra long shank 320 mm	capacity	<b>49,56</b>

**SDS PLUS SHANK ARBORS**


	DESCRIPTION	€
HA100SDS	Extra Short shank SDS-PLUS 100 mm	<b>34,83</b>
HA170SDS	Short Shank SDS-PLUS 170 mm	<b>39,36</b>
HA220SDS	Long shank SDS-PLUS 220 mm	<b>45,34</b>
HA320SDS	Extra long shank SDS-PLUS 320 mm	<b>56,46</b>

**Ø 8 x 100 mm PILOT DRILL**

**HA8  
9,92 €**
**ONE PIECE "NO BREAKING" SDS PLUS SHANK PILOT DRILL**


	DESCRIPTION	€
HA175SDSM	Short shank SDS-PLUS 175 mm	<b>76,53</b>
HA340SDSM	Long shank SDS-PLUS 340 mm	<b>99,85</b>
HA440SDSM	Extra long. SDS-PLUS 440 mm	<b>116,80</b>

**HEXAGONAL & SDS PLUS SHANK CARBIDE TIPPED LIGHT CONSTRUCTION CORE BIT**

Ref. MD



**CARBIDE TIPPED**



**60 mm CUTTING CAPACITY**



- These core bits are made of three parts that can be ordered separately:
  - The core bit with the diameters shown below.
  - Arbors: Thread M16 x 2. Available SDS PLUS and hexagonal shank.
  - Pilot drill Ø 8 mm.
- This tool is not suitable to drill metal, tile nor reinforced concrete.
- When using long arbors it is necessary to pre-drill with a shorter arbor.
- 700 R.P.M. in hammer mode

**11mm HEXAGONAL SHANK ARBORS**



**SDS PLUS SHANK ARBORS**



MD		
	Ø mm	€
MD22SH	22	33,70
MD25SH	25	40,98
MD27SH	27	41,56
MD30SH	30	47,68
MD35SH	35	52,62
MD40SH	40	60,76
MD45SH	45	67,17
MD50SH	50	69,21
MD60SH	60	78,88
MD65SH	65	79,32
MD68SH	68	79,43
MD70SH	70	103,38
MD75SH	75	111,13
MD80SH	80	111,97
MD90SH	90	117,99
MD95SH	95	127,77
MD100SH	100	134,23
MD120SH	120	159,76

	DESCRIPTION	CAPACITY Ø mm	€
HA11X100	Short shank 100 mm	Drill chuck	29,05
HA11X220	Long shank 220 mm	until 13 mm	39,64
HA11X370	Extra long shank 370mm	capacity	49,56

	DESCRIPTION	€
HA100SDS	Extra Short shank 100 mm	34,83
HA170SDS	Short Shank 170 mm	39,36
HA220SDS	Long shank 220 mm	45,34
HA320SDS	Extra long shank 320 mm	56,46

**ONE PIECE "NO BREAKING" SDS PLUS SHANK PILOT DRILL**



**Ø 8 x 120 mm PILOT DRILL**



**HA8**  
9,92€

	DESCRIPTION	€
HA175SDSM	Short shank SDS-PLUS 175 mm	76,53
HA340SDSM	Long shank SDS-PLUS 340 mm	99,85
HA440SDSM	Extra long. SDS-PLUS 440 mm	116,80

\* Price does not include arbor nor pilot drill.

**WALL BREAKTHROUGH, ARBOR, PILOT DRILL AND CORE BIT**

**NEW**

Ref. MD



**CARBIDE TIPPED**



**60 mm CUTTING CAPACITY**



	Ø mm	DESCRIPTION	€
MD50SDSB	50	Shank SDS PLUS M16	74,21
MD60SDSB	60		83,88
MD68SDSB	68		84,43
MD90SDSB	90		122,99

**HEAVY DUTY CONSTRUCTION CORE BIT FOR REINFORCED CONCRETE SDS MAX**

Holesaws

Pink

Ref. MH

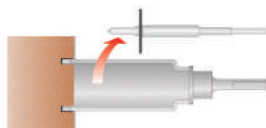

**CARBIDE  
TIPPED**

**100 mm  
CUTTING  
CAPACITY**


- 500 Rpm in most applications.
- Light axial pressure which must be reduced when we start cutting the rebar.
- Remove the center pin when the CORE BIT has penetrated into the concrete.
- Not suitable for metal or ceramic.
- Work in hammer mode.



1- Use the center pin when start drilling.



2- We remove the center pin when the CORE BIT has penetrated slightly.



	MH		
	Ø mm	Z	€
MH25	25	4	123,85
MH29	29	4	132,16
MH32	32	4	147,12
MH35	35	4	163,54
MH38	38	4	181,69
MH45	45	6	206,38
MH50	50	8	219,64
MH55	55	10	231,28
MH60	60	10	249,43
MH65	65	10	265,82
MH70	70	12	285,78
MH75	75	12	305,52
MH80	80	12	325,30
MH90	90	14	371,50
MH100	100	16	414,55
MH120	120	18	503,61
MH150	150	24	705,61



**HUGE INCREASE IN SAW  
RESISTANCE DUE TO  
EXTREMELY ROBUSTE SHANK**

Price does not include arbor nor center pin.

**ARBORS FOR EXTRA PROFESSIONAL CORE BITS**

	DESCRIPTION	CAPACITY Ø mm	€
MHSK1 MAX	SDS-MAX arbor 300 mm	25 - 35	101,61
MHSK2 MAX	SDS-MAX arbor 300 mm	38 - 150	105,83
MHCP0	Center pin N° 0	25 - 29	56,46
MHCP1	Center pin N° 1	32 - 35	56,46
MHCP2	Center pin N° 2	38 - 150	56,46



Ref. MHSK1 MAX



Ref. MHCP

**HEAVY DUTY CONSTRUCTION CARBIDE TIPPED CORE BIT WITH ANTI-BREAKAGE 1:8 TAPER CLAMPING**

**NEW**  
Ref. CLA



**CARBIDE TIPPED**



Heavy duty core bit for high performance on rotary hammers with power greater than  $\geq 900W$ .  
Inclined carbide tips in perfect position for a powerful drilling.  
Heat treated arbor and core bit for increased strength and performance.  
1:8 taper clamping makes the arbor-core bit connection more solid and improves power transmission.

**70 mm CUTTING CAPACITY**

**SDS-MAX SHANK ARBORS**



	DESCRIPTION	€
CLAMAX220	SDS-MAX shank 220 mm	<b>75,54</b>
CLAMAX420	SDS-MAX shank 420 mm	<b>89,02</b>
CLAMAX700	SDS-MAX shank 700 mm	<b>145,69</b>
CLAMAX900	SDS-MAX shank 900 mm	<b>198,36</b>

\*See range of 13 mm hexagonal shank and spline shank arbors available.



	CLA	
	Ø mm	€
CLA030	30	<b>119,04</b>
CLA035	35	<b>124,53</b>
CLA040	40	<b>127,86</b>
CLA045	45	<b>138,33</b>
CLA050	50	<b>149,36</b>
CLA055	55	<b>161,63</b>
CLA060	60	<b>165,01</b>
CLA066	66	<b>166,75</b>
CLA068	68	<b>171,44</b>
CLA070	70	<b>204,44</b>
CLA080	80	<b>237,68</b>
CLA090	90	<b>274,51</b>
CLA100	100	<b>296,59</b>
CLA110	110	<b>308,53</b>
CLA115	115	<b>320,78</b>
CLA125	125	<b>333,38</b>
CLA150	150	<b>469,07</b>

\* Price does not include arbor nor pilot drill.

**EXTRACTION KIT FOR CLA & PM**



**CLAEX**  
**42,36**

**Ø 11x135mm PILOT DRILL FOR CLA & PM CORE BITS**



**CLA11**  
**15,80**

**HEAVY DUTY INTEGRAL WALL BREAKTHROUGH, ANTI-BREAKAGE CARBIDE TIPPED**

**NEW**  
Ref. PM



**CARBIDE TIPPED**

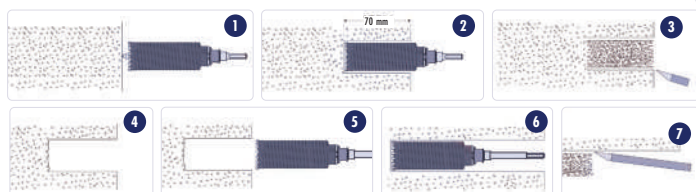


Heavy duty integral core bit for high performance in high power rotary hammers.  
Core bit with integrated arbor improves power transmission during operation.  
Inclined carbide tips in perfect position for a powerful drilling.  
Heat treated arbor and core bit for increased strength and performance.  
Deep hole drilling system with construction core bits.

**190-450 CUTTING CAPACITY**



**DEEP HOLE DRILLING SYSTEM USING CORE BITS**



	PM		
	Ø mm	Cutting Capacity mm	€
PM45X300	45	190	<b>284,06</b>
PM45X560	45	450	<b>297,54</b>
PM50X300	50	190	<b>296,05</b>
PM50X560	50	450	<b>309,53</b>
PM55X300	55	190	<b>309,38</b>
PM55X560	55	450	<b>322,86</b>
PM68X300	68	190	<b>320,05</b>
PM68X560	68	450	<b>333,53</b>
PM80X300	80	190	<b>379,13</b>
PM80X560	80	450	<b>392,61</b>
PM90X300	90	190	<b>417,16</b>
PM90X560	90	450	<b>430,64</b>
PM100X300	100	190	<b>439,96</b>
PM100X560	100	450	<b>453,44</b>
PM125X560	125	450	<b>509,55</b>
PM150X560	150	450	<b>616,25</b>

\* Price includes CLA11 pilot drill and CLAEX extraction kit.

**ELECTRODEPOSITED DIAMOND HOLESAW FOR GRANITE, MARBLE, TILE & REINFORCED PLASTIC**

Holesaws

Grey  
Pink
 Ref. CDE  
 Ref. CMAD

**40 mm**  
**CUTTING**  
**CAPACITY**
**MONOBLOCK COREBIT AND ARBOR**


	Ø mm	CDE €
CDE12	12	56,98
CDE14	14	57,53
CDE16	16	60,80
CDE18	18	64,08
CDE20	20	72,64
CDE25	25	80,48
CDE28	28	83,56
CDE30	30	88,63
CDE32	32	92,82
CDE35	35	78,51
CDE40	40	101,40
CDE43	43	102,65
CDE45	45	102,96
CDE50	50	103,46
CDE65	65	122,17
CDE68	68	137,27
CDE75	75	167,98
CDE80	80	177,49
CDE90	90	201,06
CDE100	100	201,06
CDE120	120	235,95

\* Price includes arbor and pilot drill

**INTERCHANGEABLE THREAD SHANK**

- Serial drilling of fiberglass, carbon, polyester...
- The pilot drill ejects the core automatically



	Ø mm	CMAD €
CMAD20	20	146,32
CMAD22	22	153,17
CMAD25	25	158,13
CMAD28	28	161,51
CMAD30	30	163,85
CMAD32	32	168,74
CMAD35	35	194,71
CMAD40	40	204,73
CMAD45	45	216,54
CMAD50	50	228,10

\* Price of the arbor is not included

**PILOT DRILL Ø 5 mm**

**BW90500**  
**26,50 €**

- Remove the drill when the CORE BIT has already penetrated in the material.
- We recommend to use the GCD guide for holesaws.
- Remove diamond holesaw from the hole in rotary movement in order to avoid tip breaking.
- Must be used with water cooling.
- References RPM:  
 Ø 100mm: 400 RPM  
 Ø 50mm: 800 RPM  
 Ø 20mm: 1300 RPM
- Exclusively in rotary mode, no hammer.

**HOLESAWS GUIDE**
**GCD**
**43,25 €**

Capacity: Ø 10 - 83 mm

**CAN FOR COOLING**
**GBP**
**9,73 €**

Capacity: 1,1 l.



GCD



GBP

**STRAIGHT SHANK ARBOR WITH INTERNAL COOLING**

	DESCRIPTION	€
350MC13	Straight shank arbor Ø 13 mm	234,22
350MC16	Straight shank arbor Ø 16 mm	234,22

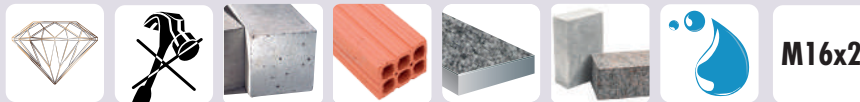




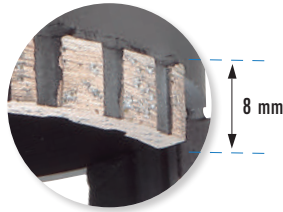
**SEGMENTED DIAMOND HOLESAW**

**NEW**

Ref. CDD



**60 mm CUTTING CAPACITY**



CDD			
	Ø mm	Z	€
CDD08	8	Circular	47,29
CDD10	10	Circular	51,51
CDD12	12	Circular	60,23
CDD15	15	Circular	65,36
CDD20	20	Circular	74,55
CDD26	26	Circular	81,25
CDD30	30	4	95,36
CDD35	35	4	103,36
CDD40	40	4	106,65
CDD45	45	4	110,62
CDD52	52	4	115,22
CDD55	55	4	120,33
CDD68	68	5	142,36
CDD72	72	5	145,25
CDD82	82	6	152,15
CDD92	92	8	162,95
CDD102	102	8	175,89



**CDD HOLESAW ARBOR**

	DESCRIPTION	€
CDDHEX	Hexagonal shank 10,8 mm Lt:120 mm	20,36
CDDMAX	SDS-Max shank Lt:200 mm	25,36
CDDPLUS	SDS-Plus shank Lt:200 mm	22,11

**PILOT DRILL SDS Plus**



**W0505x110**  
5,48 €

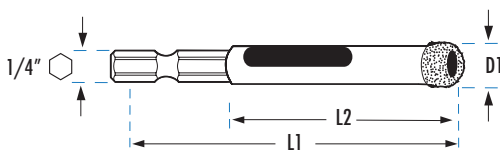
**DIAMOND TILE DRILL BIT**

**NEW**

Ref. CAH



**Diamond series**



CAH				
	D1 mm	Hexagon	L1 x L2 mm	€
CAH05	5,0	1/4	65 x 30	19,05
CAH06	6,0	1/4	65 x 30	20,42
CAH07	7,0	1/4	65 x 30	23,25
CAH08	8,0	1/4	65 x 30	26,76
CAH10	10,0	1/4	65 x 30	28,23
CAH12	12,0	1/4	65 x 30	34,83
CAH14	14,0	1/4	65 x 30	39,51
CAH15	15,0	1/4	65 x 30	59,81
CAH16	16,0	1/4	65 x 30	62,36
CAH18	18,0	1/4	65 x 30	64,25
CAH20	20,0	1/4	65 x 30	65,45
CAH22	22,0	1/4	65 x 30	71,94
CAH25	25,0	1/4	65 x 30	76,41
CAH28	28,0	1/4	65 x 30	77,36
CAH30	30,0	1/4	65 x 30	83,09
CAH32	32,0	1/4	65 x 30	89,36
CAH35	35,0	1/4	65 x 30	96,36



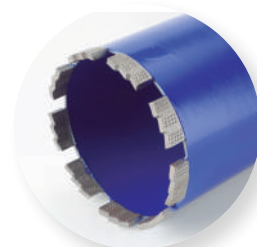
- Always drill with rotary mode
- Cooling with plenty of water during the drilling operation
- CPH drill may drill ceramics whenever some water will be between the diamond and the piece to be machined
- Never put the CPH Drill in water after drilling operations.  
Once the drill achieves high temperatures, let it getting cooled by the air.
- Start drilling with an angle between 15° and 30° and then keep on drilling horizontally. No guide needed
- Drill ceramics with soft circular movements to make easier the further extraction of the core
- Before finishing, stop pushing strongly to avoid the core to get stucked inside the holesaw
- Extract the perforated core by the lateral opening
- More holes in less time and with less effort

**DIAMOND HOLE SAW**

Holesaws

Pink

Ref. CHH


**300-450**  
**CUTTING**  
**CAPACITY**


1" 1/4

- New segmented diamond hole saw for heavy works in construction.
- High performance in intensive works in reinforced concrete, granite, stone, brick and asphalt.
- Cool with plenty of water
- Efficient and constant work that enlarges the lifetime of the tool and the machine.
- More resistant segments with more diamond content to provide the maximum performance
- Better removal of debris so the effort of the machine is reduced.
- Excellent management of the effort in high capacity machines.

**CHH**

	Ø mm	L1 mm	L2 mm	Z	KW	€
CHH32	32	380	300	3	0,7>1,2	<b>150,53</b>
CHH42	42	380	300	4	0,7>1,2	<b>164,22</b>
CHH52	52	520	450	5	0,7>1,2	<b>177,92</b>
CHH62	62	520	450	6	0,7>1,2	<b>205,30</b>
CHH72	72	520	450	6	0,7>1,2	<b>246,39</b>
CHH82	82	520	450	7	1,2>2,3	<b>260,09</b>
CHH92	92	520	450	8	1,2>2,3	<b>301,15</b>
CHH102	102	520	450	9	1,2>2,3	<b>328,54</b>
CHH112	112	520	450	9	1,2>2,3	<b>342,24</b>
CHH122	122	520	450	10	1,2>2,3	<b>369,61</b>
CHH127	127	520	450	11	1,2>2,3	<b>390,07</b>
CHH132	132	520	450	11	1,2>2,3	<b>410,68</b>
CHH142	142	520	450	12	1,2>2,3	<b>479,14</b>
CHH152	152	520	450	12	1,2>2,3	<b>479,14</b>
CHH162	162	520	450	12	2,3>3,9	<b>506,54</b>
CHH172	172	520	450	13	2,3>3,9	<b>574,98</b>
CHH182	182	520	450	13	2,3>3,9	<b>588,67</b>
CHH200	200	520	450	15	2,3>3,9	<b>657,14</b>
CHH225	225	520	450	15	2,3>3,9	<b>780,35</b>
CHH250	250	520	450	16	2,3>3,9	<b>862,50</b>
CHH300	300	520	450	17	2,3>3,9	<b>1.095,26</b>

**ARBORS FOR CHH**

**SDS**  
**Plus**


DESCRIPTION

€

ADCHH-PLUS

SDS Plus shank Lt:200 mm

**64,23**
**SDS**  
**Max**


DESCRIPTION

€

ADCHH-MAX

SDS MAX shank Lt:200 mm

**66,80**

DESCRIPTION

€

ADCHH-HEX

Hexagonal shank. Lt:220 mm

**58,05**

**CSE DIAMOND HOLESAWS FOR GRANITE, MARBLE AND HARD CERAMICS**

Ref. CSE

**SERIE  
DIAMOND**



**M14x2**

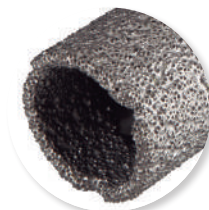
**35 mm  
CUTTING  
CAPACITY**



**FOR DRY  
DRILLING**



M14x2  
Special for angle grinder



	CSE	
	Ø mm	€
CSE05*	5	56,24
CSE06*	6	56,41
CSE08*	8	56,88
CSE10*	10	56,96
CSE12*	12	58,69
CSE14*	14	59,25
CSE16	16	62,62
CSE18	18	65,99
CSE20	20	74,80
CSE22	22	77,87
CSE25	25	82,89
CSE27	27	85,82
CSE30	30	91,27
CSE32	32	95,59
CSE35	35	98,85
CSE38	38	101,53
CSE40	40	104,42
CSE45	45	106,23
CSE50	50	106,56
CSE51	51	110,62
CSE55	55	112,71
CSE57	57	119,02
CSE60	60	122,86
CSE65	65	125,79
CSE67	67	135,26
CSE68	68	141,37
CSE70	70	154,95
CSE75	75	172,99
CSE80	80	182,77
CSE83	83	206,57
CSE90	90	227,95
CSE95	95	243,41
CSE100	100	253,74
CSE110	110	282,59
CSE120	120	294,95
CSE130	130	310,29
CSE140	140	321,73
CSE150	150	332,03

- Female thread M14x2 on the back side to be fixed on an angle grinder.
- These Holesaws can work ceramics without water. Nevertheless, using water increases drastically the performance.
- Start drilling with an angle between 15 and 30° and afterwards horizontally. No need to guide.
- Drill the ceramics making soft rotary movements.
- Remove the core after each operation.

**ADAPTORS FOR CSE**



ALCSEX50



ADCSE-MAX



ADCSE-PLUS

	DESCRIPTION	L mm	€
ALCSEX50	50mm Extension CSE M14X2,00 Ø22mm	50	15,07
ALCSEX75	75mm Extension CSE M14X2,00 Ø22mm	75	17,23
ADCSE-MAX	Adaptor CSE M14X2,00 SDS MAX	113	37,45
ADCSE-PLUS	Adaptor CSE M14X2,00 SDS PLUS	90	21,25

**CAN OF PARAFFIN**



20 cm3

**PACSE  
10,54 €**

**HEX ARBOR FOR CSE**



**ADCSE  
15,40€**

**OPTIONAL PILOT DRILL FOR ARBOR REF. ADCSE**



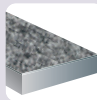
**BW90500  
26,50 €**

Holesaws

Grey  
Pink

**VACUUM BRAZED DIAMOND HOLESAWS FOR GRANITE, MARBLE AND HARD CERAMICS**

Ref. CSE

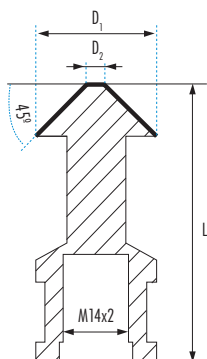

**35 mm**  
**CUTTING**  
**CAPACITY**
**Dry**  
**Working**
**Diamond**  
**series**
**CSE HOLESAWS + 1 ARBOR SET + PARAFFIN**

**CSE9328**

 4 Holesaws CSE: Ø 5 - 6 - 8 - 10 mm  
 1 Arbor  
 1 Paraffin can 20 cm3

**168,11 €**
**DIAMOND COUNTERSINKS FOR GRANITE, MARBLE AND HARD CERAMICS**

Ref. AVD


**M14x2**
**Dry**  
**Working**
**Diamond**  
**series**


- These countersinks can work ceramics without water. Nevertheless, using with water increases heavily the performance.
- Female thread M14x2 on the back side to be fixed on an angle grinder.

	D1 mm	D2 mm	$\alpha$	L1 mm		AVD €
AVD0630	6,30	1,50	90°	45	M14X2	85,72
AVD0830	8,30	2,00	90°	50	M14X2	85,72
AVD1040	10,40	2,50	90°	50	M14X2	85,72
AVD1240	12,40	2,80	90°	56	M14X2	94,30
AVD1650	16,50	3,20	90°	60	M14X2	102,87
AVD2050	20,50	3,50	90°	63	M14X2	107,16
AVD2500	25,00	3,80	90°	67	M14X2	133,94
AVD3100	31,00	4,20	90°	71	M14X2	166,10

**GRIT EDGE HOLE SAW FOR NON METALLIC MATERIALS**

Ref. MG



**30 mm CUTTING CAPACITY**



**VERY CLEAN FINISHING**

- Ideal for use in agglomerate and wood



**HEXAGONAL SHANK ARBORS FOR Ref. MG HOLESAWS**

	Ø mm	PACKAGING	€
B5519-CM	16 - 29	Box	11,02
B5546-CM	32 - 114	Box	18,78
B5519-CMS	16 - 29	Blister	11,02
B5546-CMS	32 - 114	Blister	18,78



**CARBIDE TIPPED PILOT DRILLS**

Ø 6,35 mm

	LTmm	PACKAGING	€
B8537	82 mm	Box	2,72
B8538	97 mm	Box	2,72
B8537S	82 mm	Blister	5,01
B8538S	97 mm	Blister	5,01

Ø mm	Carton		Blister	
	Ref.	€	Ref.	€
16	MG16	13,60	MG16B	13,60
19	MG19	15,75	MG19B	15,75
20	MG20	17,71	MG20B	17,71
22	MG22	17,71	MG22B	17,71
25	MG25	18,55	MG25B	18,55
29	MG29	21,73	MG29B	21,73
32	MG32	24,59	MG32B	24,59
35	MG35	25,44	MG35B	25,44
38	MG38	27,49	MG38B	27,49
44	MG44	28,25	MG44B	28,25
48	MG48	30,26	MG48B	30,26
51	MG51	30,26	MG51B	30,26
54	MG54	30,06	MG54B	30,06
57	MG57	31,69	MG57B	31,69
60	MG60	33,92	MG60B	33,92
64	MG64	33,92	MG64B	33,92
70	MG70	39,07	MG70B	39,07
76	MG76	44,10	MG76B	44,10
83	MG83	45,04	MG83B	45,04
86	MG86	47,32		
95	MG95	50,04		
102	MG102	50,99		
114	MG114	55,35		

\* Price does not include arbor nor pilot drill.

**MASTER-GRIT HOLESAWS BOXES**



Ref. MG9573



Ref. MG9572

MG9571 6 Holesaws MG:  
22 - 35 - 51 - 60 - 64 - 70 mm

**Content:**

- 1 Arbor Ref. B5519-CM ⬡ 9,5 Capacity 14-30
- 1 Arbor Ref. B5546-CM ⬡ 9,5 Capacity 32-250
- 1 Arbor adapter Ref. B5511

**186,08 €**

MG9572 10 Holesaws MG:  
20-22-25-32-35-38-44-60-70-76 mm

**Content:**

- 1 Arbor Ref. B5519-CM ⬡ 9,5 Capacity 14-30
- 1 Arbor Ref. B5546-CM ⬡ 9,5 Capacity 32-250
- 1 Arbor adapter Ref. B5511

**201,35 €**

MG9573 7 Holesaws MG:  
20 - 25 - 29 - 38 - 44 - 60 - 70 mm

**Content:**

- 1 Arbor Ref. B5519-CM ⬡ 9,5 Capacity 14-30
- 1 Arbor Ref. B5546-CM ⬡ 9,5 Capacity 32-250
- 1 Arbor adapter Ref. B5511

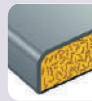
**176,48 €**

**HIGH PERFORMANCE CARBIDE TIPPED HOLESAW FOR WOOD**

Holesaws

Pink

Ref. CM

**CARBIDE  
TIPPED**

**60 mm  
CUTTING  
CAPACITY**


- High cutting speed.
- Great lateral chip evacuation.
- Long life even in abrasive material.
- Optimal hole finishing.
- Exclusively in rotary mode, no hammer.



CM		
	Ø mm	€
CM022	22	30,59
CM025	25	33,08
CM027	27	34,62
CM030	30	38,04
CM032	32	41,30
CM035	35	41,30
CM038	38	49,51
CM040	40	49,51
CM045	45	53,70
CM050	50	58,58
CM055	55	61,62
CM060	60	67,07
CM062	62	75,54
CM065	65	75,54
CM068	68	83,20
CM070	70	86,25
CM075	75	98,60
CM080	80	98,60
CM090	90	108,70
CM095	95	121,76
CM100	100	121,76
CM110	110	143,20
CM120	120	160,78
CM125	125	170,87
CM130	130	194,98
CM140	140	218,57
CM150	150	225,52
CM160	160	242,14

CUTTING SPEED	
CAPACITY Ø mm	R.P.M.
22 - 27	2.800
30 - 38	2.300
40 - 50	1.800
55 - 60	1.500
62 - 80	1.000
90 - 100	700
108 - 125	500

\* Price includes arbor and pilot drill

**ARBORS FOR WOOD HOLESAWS**


Ref. CMB5520



Ref. CMB5545



Ref. CMB5556SDS

DESCRIPTION	€
CMB5520 Straight shank 11 mm Ø 22 - 32 mm	15,63
CMB5529SDS Straight shank Ø 35 - 125 mm	17,71
CMB5545 SDS PLUS shank 11 mm Ø 45 - 160 mm	21,12
CMB5556SDS SDS PLUS shank Ø 45 - 160 mm	32,77

**PILOT DRILL Ø 6,35 x 107 mm**


Ref. B8535

**B8535  
3,06 €**

**CIRCLE CUTTING HOLE CUTTERS**

**200 mm**

**DRYWALL  
CAST**



- Multipurpose circle cutting hole cutters with adjustable blade.
- To cut large circles in ceilings, walls, and floors.
- Chip holding system to allow clean work.
- Works in aluminium, brass and metal up to 1 mm thickness.
- Minimum cutting diameter: 40mm
- Blade CL12-BT002 installed and CL12-BH002 provided in the case.



Holesaws  
Pink



**CIRCLE CUTTING HOLE CUTTERS 200 mm**

**TB-9600-200**  
**248,44 €**

**SPARE PARTS**



CL12-BT002



CL12-BH002

	DESCRIPTION	€
CL12-BH002	Blade for wood, pladur, laminated panels, etc	20,69
CL12-BT002	Blade for plaster and metals up to 1mm thickness	26,19

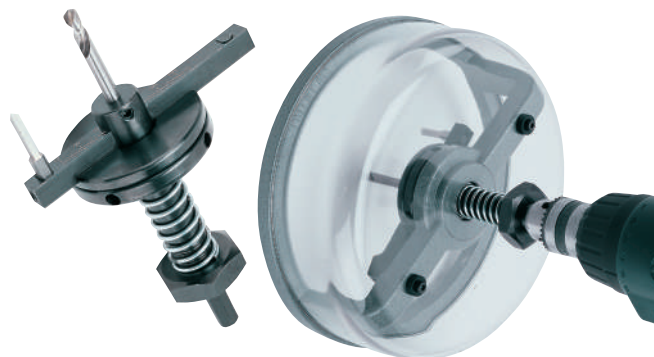
## CIRCLE CUTTING HOLE CUTTERS

### 220 mm & 285 mm

**DRYWALL  
CAST**



- Multipurpose circle cutting hole cutters with adjustable blade.
- To cut large circles in ceilings, walls, and floors.
- Chip holding system to allow clean work.
- Works in aluminium, brass and metal up to 1 mm thickness.
- Minimum cutting diameter: 40mm
- Blade CL12HSS installed



### CIRCLE CUTTING HOLE CUTTERS 220 mm

**CL220**  
260,09 €

### CIRCLE CUTTING HOLE CUTTERS 285 mm

**CL285**  
299,11 €



### SPARE PARTS

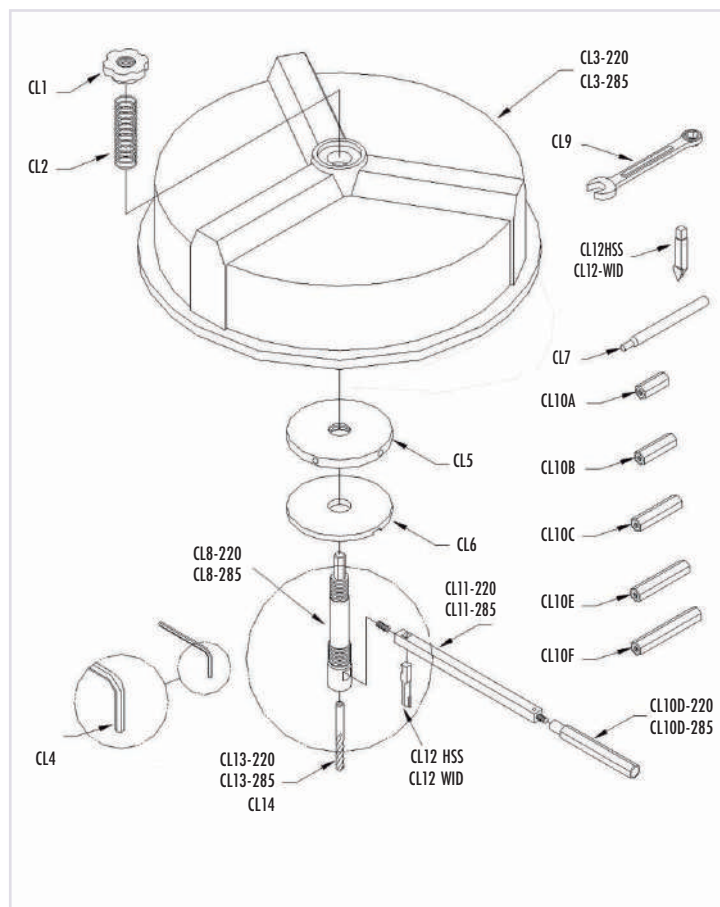


**CL12HSS:** Blade for wood, plaster, laminated panels, etc



**CL12WID:** Blade metals up to 1mm thickness

	DESCRIPTION	€
CL1	Hexagonal nut 220 / 285	9,49
CL2	Compression spring 220 / 285	2,68
CL3-220	Cowl with bearing 220	94,92
CL3-285	Cowl with bearing 285	141,33
CL4	Allen key 220/285 (3 mm)	2,69
CL5	Fixed plate 220 / 285	18,49
CL6	Adjusting plate 220 / 285	7,91
CL7	Adjusting rod 220 / 285	5,35
CL8-220	Vertical axle 220	42,23
CL8-285	Vertical axle 285	44,88
CL9	Combination wrench 220 / 285	7,91
CL10A	Balance f/d220-d285-d410 of 33 mm.	3,80
CL10B	Balance f/d220-d285-d410 of 40 mm.	4,32
CL10C	Balance f/d220-d285-d410 of 56 mm.	5,02
CL10D-220	Balance f/d220 of 74 mm.	5,35
CL10D-285	Balance f/d285-d410 of 74 mm.	5,35
CL10E	Balance f/d285-d410 of 95 mm.	6,91
CL10F	Balance f/d285-d410 of 120 mm.	9,17
CL10-285	Balance d285 (6pcs)	15,72
CL11-220	Transversal axle for 220	18,49
CL11-285	Transversal axle for 285	26,08
CL12HSS	Blade for wood, pladur, laminated panels	21,15
CL12WID	Blade metals up to 1mm thickness	27,72
CL13-220	Pilot drill 220	17,64
CL13-285	Pilot drill 285	18,24
CL14	HSS pilot drill 285	20,00





**CIRCLE CUTTING HOLE CUTTERS**

**410 mm**

**DRYWALL  
CAST**



- For bigger diameters.
- High resistant carbide tip with innovative geometry.
- Better hole finishing.
- The spare parts of holesaws 163 mm, 200 mm, 220 mm & 285 mm are valid for CL410 with exception of balances CL10G and CL10H.
- Blade CL12HSS installed



**CIRCLE CUTTING HOLE CUTTERS 410 mm**

**CL410**  
**508,58 €**

**SPARE PARTS**

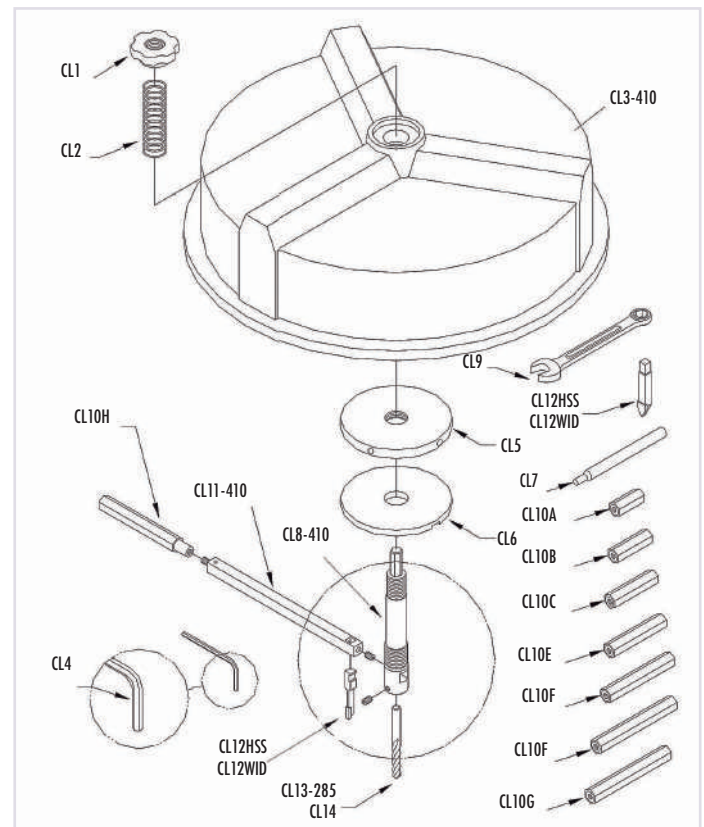


CL12HSS: blade for wood, plaster, laminated panels, etc



CL12WID: blade metals up to 1mm thickness

	DESCRIPTION	€
CL1	Hexagonal nut 220 / 285 & 410	<b>9,49</b>
CL2	Compression spring 220, 285 & 410	<b>2,68</b>
CL3-410	Cowl with bearing 410	<b>171,50</b>
CL4	Allen key 220/285 (3 mm)	<b>2,69</b>
CL5	Fixed plate 220, 285 & 410	<b>18,49</b>
CL6	Adjusting plate 220, 285 & 410	<b>7,91</b>
CL7	Vertical axle 220, 285 & 410	<b>5,35</b>
CL8-410	Vertical axle 410	<b>63,27</b>
CL9	Combination wrench 220, 285 & 410	<b>7,91</b>
CL10A	Balance p/cl220-cl285-cl410 of 33 mm	<b>3,80</b>
CL10B	Balance p/cl220-cl285-cl410 of 40 mm	<b>4,32</b>
CL10C	Balance p/cl220-cl285-cl410 of 56 mm	<b>5,02</b>
CL10E	Balance p/cl285-cl410 of 95 mm	<b>6,91</b>
CL10F	Balance p/cl285-cl410 of 120 mm	<b>9,17</b>
CL10G	Balance p/d410 of 145 mm	<b>11,34</b>
CL10H	Balance p/d410 d of e 175 mm	<b>14,34</b>
CL11-410	Transversal axle for d410	<b>37,84</b>
CL12HSS	Cutter	<b>21,15</b>
CL12WID	Cutter	<b>27,72</b>
CL13-285	Solid carbide drill guide 285 & 410	<b>18,24</b>
CL14	HSS pilot drill 285 & 410	<b>20,00</b>



**DIAMOND HOLESAW FOR CONCRETE WITH REBARS WITH QUICK CHANGE POLY-CLIC**

Holesaws

Pink

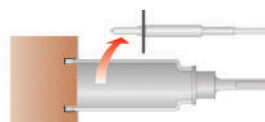
Ref. CDH


**150 mm**  
**CUTTING**  
**CAPACITY**

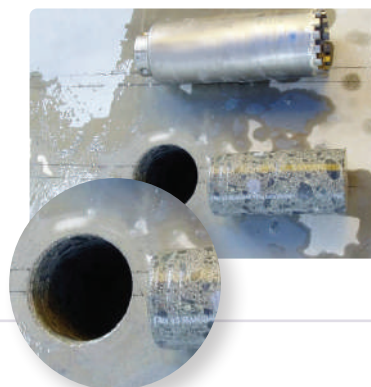

- Exclusively in rotary mode, no hammer.
- Must be used with water cooling.
- High speed (2500-3000 R.P.M.).
- Remove the drill when the CORE BIT has already penetrated in the material.
- We recommend to use the GCD guide for holesaws.
- Remove diamond holesaw from the hole in rotary movement in order to avoid tip breakages.



1- Use Center pin to start drilling



2- We remove the center pin when the CORE BIT has penetrated slightly.



CDH		
	Ø mm	€
CDH29	29	193,80 *
CDH32	32	193,80 *
CDH35	35	193,80 *
CDH38	38	193,80 *
CDH45	45	193,80 *
CDH50	50	214,85 *
CDH65	65	242,24 *
CDH70	70	263,30 *
CDH75	75	284,38 *
CDH90	90	351,76 *
CDH100	100	431,82 *
CDH120	120	463,41 *
CDH170	170	642,45 *
CDH220	220	859,41 *

Price does not include arbor nor center pin.

\* Till end of stock


**CAN FOR COOLING**

Capacity: 1,1 l.

**GBP**  
**9,73 €**
**ACCESSORIES**

	DESCRIPTION	CAPACITY	€
CDHAPH	Hexagonal shank short	25 - 45	210,64 *
CDHAPSDS	SDS PLUS short	25 - 45	210,64 *
CDHAPH300	SDS PLUS 300mm	25 - 45	221,17 *
CDHAGH	Hexagonal shank short	50 - 220	242,24 *
CDHAGSDS	SDS PLUS short	50 - 220	242,24 *
CDHAGH300	Hexagonal 300mm	50 - 220	263,30 *
CDHBHP	centering pin	25 - 220	29,48 *

\* Till end of stock